

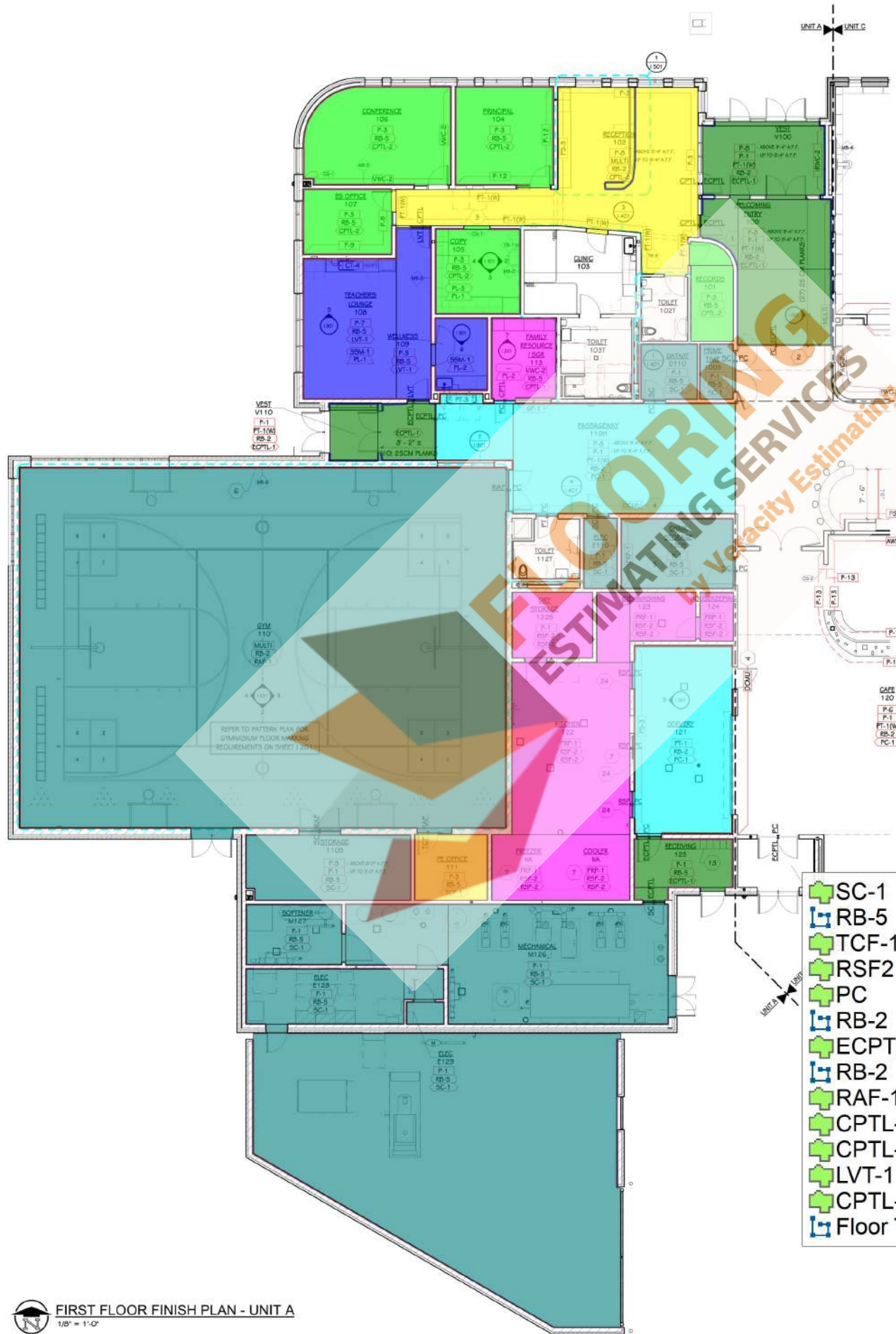
Building Data Summary	
Project ID:	*****
Location:	***** Michigan
Scope of Work:	Flooring
Date:	*****

Item #	Ref. Sheet #	Item Description	Unit	Quantity	Wastage	Quantity w/ Wastage	Unit Material Cost	Total Material Cost	Unit Manhour	Hourly Wage	Unit Labor Cost	Total Labor Cost	Sub Cost	Total Trade Cost
DIVISION.01 GENERAL REQUIREMENTS														
1		Supervision and Coordination	LS	1	0%	1	\$ -	\$ -	0.000	\$ -	\$ -	\$ -	\$ -	
2		Submittals and Shop drawings	LS	1	0%	1	\$ -	\$ -	0.000	\$ -	\$ -	\$ -	\$ -	
3		Final Cleaning	LS	1	0%	1	\$ -	\$ -	0.000	\$ -	\$ -	\$ -	\$ -	
4		Mobilization Costs	LS	1	0%	1	\$ -	\$ -	0.000	\$ -	\$ -	\$ -	\$ -	
5		Temporary Control & Facilities	LS	1	0%	1	\$ -	\$ -	0.000	\$ -	\$ -	\$ -	\$ -	
		Subtotal (General Requirements)												\$ -
DIVISION 09- FINISHES														
		Flooring												
		Carpet Tile												
6		"CPTL-1" (9"x36") Carpet Tile Manuf: Shaw Contract Group Colour: Shade Product No: 5T424-88557	SF	894	5%	939	\$ -	\$ -	0.000	\$ -	\$ -	\$ -	\$ -	
7		"CPTL-2" (1M x 1M) Carpet Tile Manuf: Milliken Colour: Static Product No: SOC250	SF	1574	5%	1653	\$ -	\$ -	0.000	\$ -	\$ -	\$ -	\$ -	
8		"CPTL-2" (1M x 1M) Carpet Tile In Music Room Manuf: Milliken Colour: Static Product No: SOC250	SF	701	5%	736	\$ -	\$ -	0.000	\$ -	\$ -	\$ -	\$ -	
9		"CPTL-4" (25CM x 1M) Carpet Tile Manuf: Milliken Colour: Static Product No: SOC250	SF	5413	5%	5684	\$ -	\$ -	0.000	\$ -	\$ -	\$ -	\$ -	
10		"CPTL-4A" (25CM x 1M) Carpet Tile In Library Manuf: Milliken Colour: Static Product No: SOC250	SF	990	5%	1040	\$ -	\$ -	0.000	\$ -	\$ -	\$ -	\$ -	
11		"CPTL-4A" (25CM x 1M) Carpet Tile In Upper Heart Manuf: Milliken Colour: Static Product No: SOC250	SF	777	5%	816	\$ -	\$ -	0.000	\$ -	\$ -	\$ -	\$ -	
12		"CPTL-5" (25CM x 1M) Carpet Tile Manuf: Milliken Colour: Echo Product No: SOC258	SF	1496	5%	1571	\$ -	\$ -	0.000	\$ -	\$ -	\$ -	\$ -	
13		"CPTL-5B" (25CM x 1M) Carpet Tile In Library Manuf: Milliken Colour: Echo Product No: SOC258	SF	278	5%	292	\$ -	\$ -	0.000	\$ -	\$ -	\$ -	\$ -	
14		"CPTL-6" (25CM x 1M) Carpet Tile Manuf: Milliken Colour: Aural Product No: SOC192	SF	275	5%	289	\$ -	\$ -	0.000	\$ -	\$ -	\$ -	\$ -	
15		"CPTL-6D" (25CM x 1M) Carpet Tile In Library Manuf: Milliken Colour: Aural Product No: SOC192	SF	314	5%	330	\$ -	\$ -	0.000	\$ -	\$ -	\$ -	\$ -	

Item #	Ref. Sheet #	Item Description	Unit	Quantity	Wastage	Quantity w/ Wastage	Unit Material Cost	Total Material Cost	Unit Manhour	Hourly Wage	Unit Labor Cost	Total Labor Cost	Sub Cost	Total Trade Cost
16	(I101A- I102B, 1401- 1421)	"CPTL-6D" (25CM x 1M) Carpet Tile In Upper Heart Manuf: Milliken Colour: Aural Product No: SOC192	SF	148	5%	155	\$ -	\$ -	0.000	\$ -	\$ -	\$ -	\$ -	
17		"CPTL-6E" (25CM x 1M) Carpet Tile In Library Manuf: Milliken Colour: Aural Product No: SOC192	SF	203	5%	213	\$ -	\$ -	0.000	\$ -	\$ -	\$ -	\$ -	
18		"CPTL-7" (25CM x 1M) Carpet Tile Manuf: Milliken Colour: Sing Product No: SOC283	SF	282	5%	296	\$ -	\$ -	0.000	\$ -	\$ -	\$ -	\$ -	
19		"CPTL-7C" (25CM x 1M) Carpet Tile In Library Manuf: Milliken Colour: Sing Product No: SOC283	SF	204	5%	214	\$ -	\$ -	0.000	\$ -	\$ -	\$ -	\$ -	
20		"CPTL-7C" (25CM x 1M) Carpet Tile In Upper Heart Manuf: Milliken Colour: Sing Product No: SOC283	SF	175	5%	184	\$ -	\$ -	0.000	\$ -	\$ -	\$ -	\$ -	
21		"EPCT-1" (25CM x 1M) Entrance Carpet Tile Manuf: Milliken Colour: Grey Product No: GRC235-27	SF	2850	5%	2993	\$ -	\$ -	0.000	\$ -	\$ -	\$ -	\$ -	
		Luxury Vinyl												
22		"LVT-1" (9"x36") Luxury Vinyl Tile Manuf: Patcraft Colour: Ivory Willow Product No: 1730V	SF	1707	5%	1792	\$ -	\$ -	0.000	\$ -	\$ -	\$ -	\$ -	
		Concrete Floor												
23		"PC-1" Polish Concrete Manuf: N/G Colour: Natural Product No: N/G	SF	6959	5%	7307	\$ -	\$ -	0.000	\$ -	\$ -	\$ -	\$ -	
24		"SC-1" Sealed Concrete Floor Manuf: N/G Colour: N/G Product No: N/G	SF	7038	5%	7390	\$ -	\$ -	0.000	\$ -	\$ -	\$ -	\$ -	
		Porcelain Tile												
25		"PT-4" (12"x24") Porcelain Tile Manuf: Milestone Colour: Black Product No: MLSARBL1224	SF	1754	5%	1842	\$ -	\$ -	0.000	\$ -	\$ -	\$ -	\$ -	
26		"PTM-1" (2"x2" Mesh Mounted) Porcelain Tile Mosaic Manuf: Milestone Colour: Black Product No: MLSARBLMOS22	SF	10	5%	11	\$ -	\$ -	0.000	\$ -	\$ -	\$ -	\$ -	
		Resilient Sheet												
27		"RAF-1" (1.5M Roll Width) Resilient Athletic Floor Manuf: Gerflor Colour: Light Cherry Product No: 6350	SF	4046	5%	4248	\$ -	\$ -	0.000	\$ -	\$ -	\$ -	\$ -	
28		"RSF-2" (5'-0"x8'-0") 1/4" Thick Resilient Sheet Floor Manuf: Ocado Plastic Colour: Dark Grey Product No: N/G	SF	963	5%	1011	\$ -	\$ -	0.000	\$ -	\$ -	\$ -	\$ -	

Item #	Ref. Sheet #	Item Description	Unit	Quantity	Wastage	Quantity w/ Wastage	Unit Material Cost	Total Material Cost	Unit Manhour	Hourly Wage	Unit Labor Cost	Total Labor Cost	Sub Cost	Total Trade Cost
29		"RSF-3" (6' Wide Roll) Resilient Sheet Floor Manuf: C.I Takiron Colour: Storm Product No: 937	SF	882	5%	926	\$ -	\$ -	0.000	\$ -	\$ -	\$ -	\$ -	
30		"RSF-4" (2mm Thick, 2m Wide Roll) Resilient Sheet Floor Manuf: Polyfer Colour: Potter Wheel Product No: 8628	SF	200	5%	210	\$ -	\$ -	0.000	\$ -	\$ -	\$ -	\$ -	
31		"RST-1" Resilient Stair Tread (Size Not Given) Manuf: C.I Tarikon Colour: Storm Product No: 937	SF	384	5%	403	\$ -	\$ -	0.000	\$ -	\$ -	\$ -	\$ -	
		Textile Composite												
32		"TCF-1" (24"x24") Textile Composite Floor Manuf: J+J Flooring Kinetex Colour: Generation Product No: 1854-3407	SF	27331	5%	28698	\$ -	\$ -	0.000	\$ -	\$ -	\$ -	\$ -	
		Graphic Printed Tile (Music Room)												
33		"G001 - G025" Graphic Printed Carpet Tile - 269 SF	EA	25	5%	26	\$ -	\$ -	0.000	\$ -	\$ -	\$ -	\$ -	
		Wall Base												
34		"RSF-1" (2mm Thick, 2m Wide Roll) Resilient Sheet Floor @ Riser Manuf: Forbo Colour: Chocolate Blues Product No: 3583	LF	135	5%	142	\$ -	\$ -	0.000	\$ -	\$ -	\$ -	\$ -	
35		"RB-1" (4" H) Rubber Base Manuf: Tarkett/ Johnsonite Colour: Whelsh Castle Product No: TAB	LF	4615	5%	4846	\$ -	\$ -	0.000	\$ -	\$ -	\$ -	\$ -	
36		"RB-2" (4" H) Rubber Base Manuf: Tarkett/ Johnsonite Colour: Burnt Umber Product No: 63	LF	1685	5%	1769	\$ -	\$ -	0.000	\$ -	\$ -	\$ -	\$ -	
37		"RB-5" (4" H) Rubber Base Manuf: Tarkett/ Johnsonite Colour: Burnt Umber Product No: 63	LF	2135	5%	2242	\$ -	\$ -	0.000	\$ -	\$ -	\$ -	\$ -	
38		"PTB-1" (4" x 24" Factory Cut) Porcelain Tile Base Manuf: Milestone Colour: Black Product No: N/G	LF	247	5%	259	\$ -	\$ -	0.000	\$ -	\$ -	\$ -	\$ -	
		Heighted As Base												
39		"CT-1" (2"x10") Ceramic Tile @ 2'-6"H Wall Manuf: WOW Colour: Prussian Product No: 133175	LF	232	5%	244	\$ -	\$ -	0.000	\$ -	\$ -	\$ -	\$ -	
		Wall Tile												
		Ceramic Tile												
40		"CT-1" (2"x10") Ceramic Tile Manuf: WOW Colour: Prussian Product No: 133174	SF	185	5%	194	\$ -	\$ -	0.000	\$ -	\$ -	\$ -	\$ -	
41		"CT-2" (2"x10") Ceramic Tile Manuf: WOW Colour: Wine Product No: 133175	SF	238	5%	250	\$ -	\$ -	0.000	\$ -	\$ -	\$ -	\$ -	

Item #	Ref. Sheet #	Item Description	Unit	Quantity	Wastage	Quantity w/ Wastage	Unit Material Cost	Total Material Cost	Unit Manhour	Hourly Wage	Unit Labor Cost	Total Labor Cost	Sub Cost	Total Trade Cost	
42		"CT-3" (2"x10") Ceramic Tile Manuf: WOW Colour: Forest Product No: 133173	SF	32	5%	34	\$ -	\$ -	0.000	\$ -	\$ -	\$ -	\$ -		
		Porcelain Tile													
43		"PT-1" (12"x48") Porcelain Tile Manuf: ISLA Tiles Colour: Bianco Product No: ISASHBI1248R	SF	7987	5%	8386	\$ -	\$ -	0.000	\$ -	\$ -	\$ -	\$ -		
44		"PT-2" (12"x24") Porcelain Tile Manuf: ISLA Tiles Colour: Bianco Bacchette Mosaic Product No: ISASHBIBACCHETTE	SF	367	5%	385	\$ -	\$ -	0.000	\$ -	\$ -	\$ -	\$ -		
45		"PT-3" (12"x24") Porcelain Tile Manuf: ISLA Tiles Colour: Creama Bacchette Mosaic Product No: ISASHBIBACCHETTE	SF	553	5%	581	\$ -	\$ -	0.000	\$ -	\$ -	\$ -	\$ -		
		Porcelain Slab													
46		"PS-3" Porcelain Slab Manuf: Ceaser Ceramiche Colour: Reed Decorative Slab Product No: CAEJOREREED	SF	445	5%	467	\$ -	\$ -	0.000	\$ -	\$ -	\$ -	\$ -		
47		"PS-P" Porcelain Slab (Detail Not Given)	SF	190	5%	200	\$ -	\$ -	0.000	\$ -	\$ -	\$ -	\$ -		
		Transition													
48		Floor Transition Strip (Standard Material & Size)	LF	517	5%	543	\$ -	\$ -	0.000	\$ -	\$ -	\$ -	\$ -		
		Subtotal (Finishes)					\$ -				\$ -			\$ -	
													PROJECTED COST	\$ -	
													INSURANCE	3%	\$ -
													CONTINGENCY	5%	\$ -
													OVERHEAD AND PROFIT	15%	\$ -
													TAX	0.00%	\$ -
													SUGGESTED BID	\$ -	



- SC-1
- RB-5
- TCF-1
- RSF2
- PC
- RB-2
- ECPTL-1
- RB-2
- RAF-1
- CPTL-2
- CPTL-2
- LVT-1
- CPTL-1
- Floor Transition strip

3,605.9 SQ FT
1,030.2 FT
109.6 SQ FT
962.3 SQ FT
1,104.9 SQ FT
371.1 FT
826.7 SQ FT
135.5 FT
4,045.1 SQ FT
924.7 SQ FT
648.9 SQ FT
523.7 SQ FT
117.9 SQ FT
91.5 FT

NOTED IN
D WHITE,
OBTAIN



- ### INTERIOR - GENERAL NOTES - FINISH PLANS
- FINISH TAGS APPLY TO LIKE MATERIALS IN ENTIRE ROOM. I.E. CASEWORK TAG MAY ONLY CALLOUT ONE RUN OF CASEWORK, BUT ALL CASEWORK IN ROOM RECEIVE THE SAME FINISHES, UNLESS TAGGED DIFFERENTLY.
 - REFER TO ENLARGED FINISH PLANS AND PATTERN PLANS FOR ADDITIONAL FINISH DETAILS.
 - DASHED LINES INDICATE LINE OF CEILING ABOVE, REFER TO REFLECTED CEILING PLANS.
 - CASEWORK FINISH TAGS DO NOT APPLY TO CUSTOM MILLWORK PIECES. REFER TO ENLARGED MILLWORK DETAILS FOR FINISH MATERIALS.
 - CASEWORK FINISH TAGS DO NOT APPLY TO EDUCATIONAL CASEGOOD PIECES. REFER TO TAGS AND SPECIFICATIONS FOR ADDITIONAL INFORMATION ON TYPE AND FINISH.
 - PORCELAIN TILE WAINSCOT IS NOT REQUIRED BEHIND STUDENT CUBBIES.
 - AT ALL AREAS OF EXPOSED CEILING, CEILING DATUM TO BE HELD AT 9'-4" AFF, UNLESS OTHERWISE NOTED. ALL INFRASTRUCTURE TO BE HELD ABOVE THIS DATUM, REFER TO REFLECTED CEILING PLAN AND NOTES FOR PAINTING SCOPE AND INTENT.
 - HALFTONE RESIDENTIAL AND BUSINESS EQUIPMENT TO BE OWNER FURNISHED.
- ### INTERIOR - KEYED NOTES - FINISH PLAN
- WHERE RADIIUSED WALLS ARE INDICATED TO BE PT-1(W), PROVIDE PT-2 COORDINATING MOSAIC AS REQUIRED TO WRAP TO NEAREST FLAT SURFACE. ALIGN ALL GROUT JOINTS.
 - ALIGN FLOORING TRANSITION AS INDICATED.
 - CONTINUE PORCELAIN TILE WAINSCOT PT-1(W) INTO RETURN/JAMBS.
 - DO NOT APPLY PAINT OR PORCELAIN TILE WAINSCOT TO DECORATIVE CONCRETE, MASONRY WALLS, TYPICAL.
 - FRP PANELS TO BE INSTALLED ABOVE RUBBER BASE, INSTALL FULL SHEET VERTICALLY ORIENTED.
 - ABUSE-RESISTANT GYPSUM BOARD PROJECTION SURFACE WITH LEVEL 5 FINISH WITH MITERED DARK BRONZE ANCOZED J-CHANNEL FRAME. REFER TO ELEVATION.
 - VERIFY FINISH EXTENTS WITH FOOD SERVICE EQUIPMENT PRIOR TO INSTALLATION.
 - 36" WIDE X 24" DEEP ADJUSTABLE PR-1 SHELVING ON WALL STANDARDS.
 - 36" WIDE X 12" DEEP ADJUSTABLE PR-1 SHELVING ON WALL STANDARDS.
 - MEDIUM-GROUND POLISHED CONCRETE (FILL IN METAL PAN STAIRS, PROVIDE (2) INSET STAINLESS STEEL BARS AT NOSING OF EACH STAIR TREAD.
 - PROVIDE CONTINUOUS, MITERED PURRING STRIPS ABOVE WAINSCOT FOR FLUSH AND FLAT TACKBOARD INSTALLATION, CAULK ALL JOINTS AND PAINT TO MATCH WALL.
 - SKIMCOAT CMU WALL AS REQUIRED FOR SMOOTH IRMP-1 INSTALLATION, REFER TO ELEVATION FOR EXTENTS.
 - METAL LOCKERS, REFER TO ARCHITECTURAL.
 - ALIGN FLOORING TRANSITION TO DOOR FRAME.
 - ALIGN FLOORING TRANSITION TO CABINET EDGE/CORNER.
 - ALIGN FLOORING TRANSITION TO CORNER.
 - ALIGN FLOORING TRANSITION TO WINDOW.
 - WHERE FURRED WALLS WITH ACOUSTIC WALLCOVERING TERMINATE, PAINT RETURN P-1 UNLESS NOTED OTHERWISE.
 - WHERE ACOUSTIC WALLCOVERING TERMINATES ALONG A FLAT SURFACE, PROVIDE FRP RESIST TERMINATION TRIM ALIGNED TO OUTSIDE FACE OF DULHEAD TO CAPTURE EXPOSED EDGE OF AWC.
 - PROVIDE CONTRASTING RESILIENT ACCENT STRIP AT TOP AND BOTTOM OF RAMP.
 - SOLID SURFACE CAP AND WATERFALL EDGE, SSMA-1 - REFER TO DETAILS.
 - SOLID SURFACE CAP, SSMA-1 - REFER TO DETAILS.
 - RETURN PURRING AND TILE TO FRAME.
 - FRP TO WRAP OPENINGS.
 - 1" THICK UNIT CHROMA FIN PARTITION, RP-2.

PROJECT TITLE
WOODLAND ELEMENTARY SCHOOL

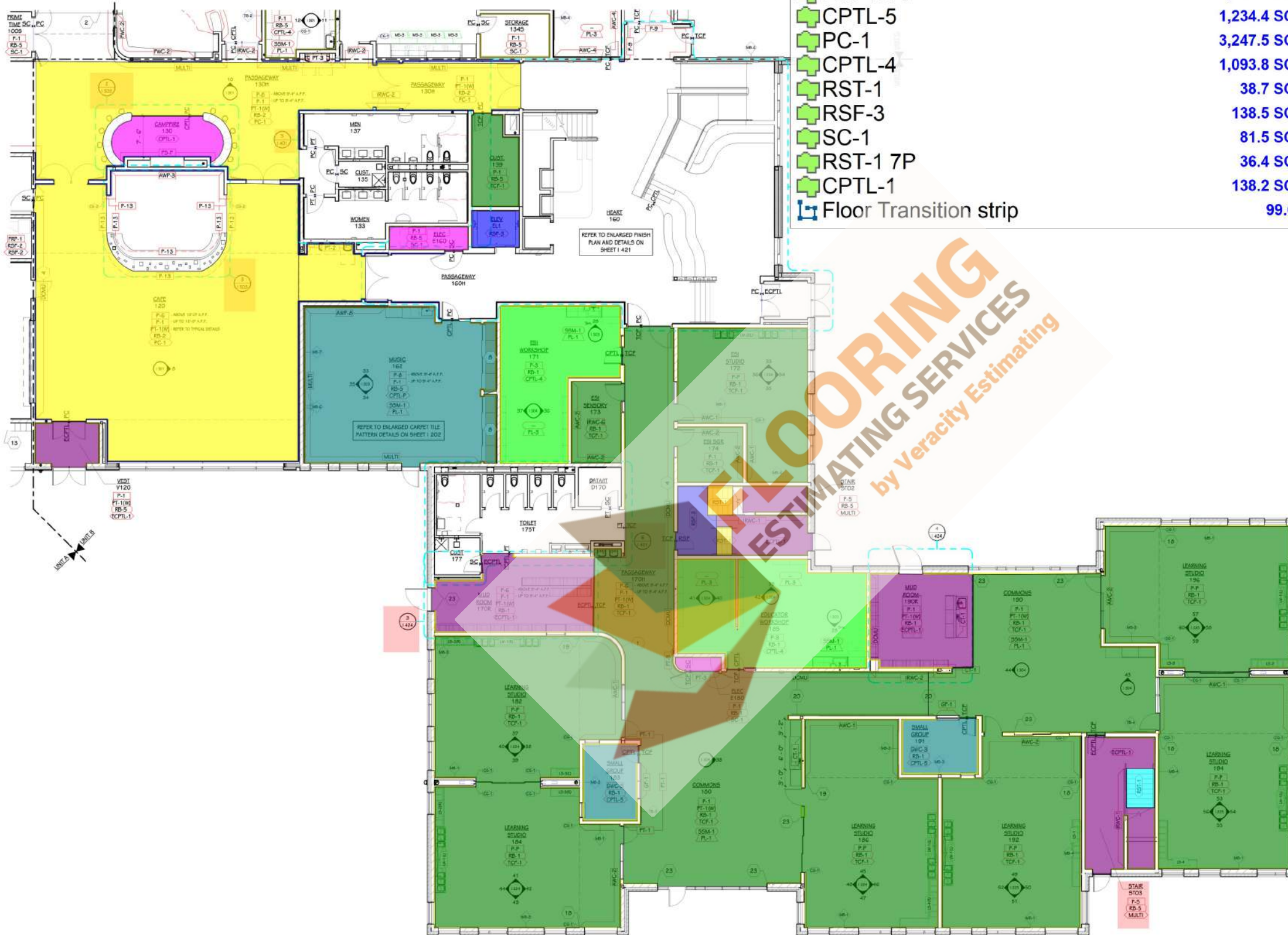
OWNER
PORTAGE PUBLIC SCHOOLS

SHEET TITLE
FIRST FLOOR FINISH PLAN - UNIT A

Portage, Michigan

DATE
NOVEMBER 15, 2024

SHEET NUMBER
I 101A
21-237.50



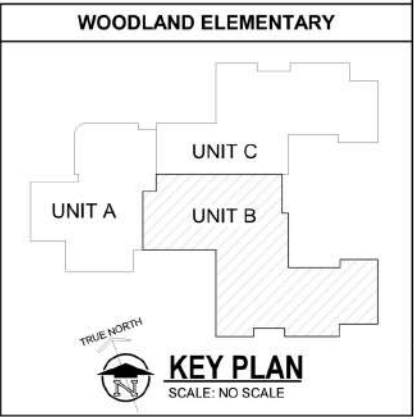
- RB-1
- TCF-1
- RB-5
- RB-2
- ECPTL-1
- CPTL-5
- PC-1
- CPTL-4
- RST-1
- RSF-3
- SC-1
- RST-1 7P
- CPTL-1
- Floor Transition strip

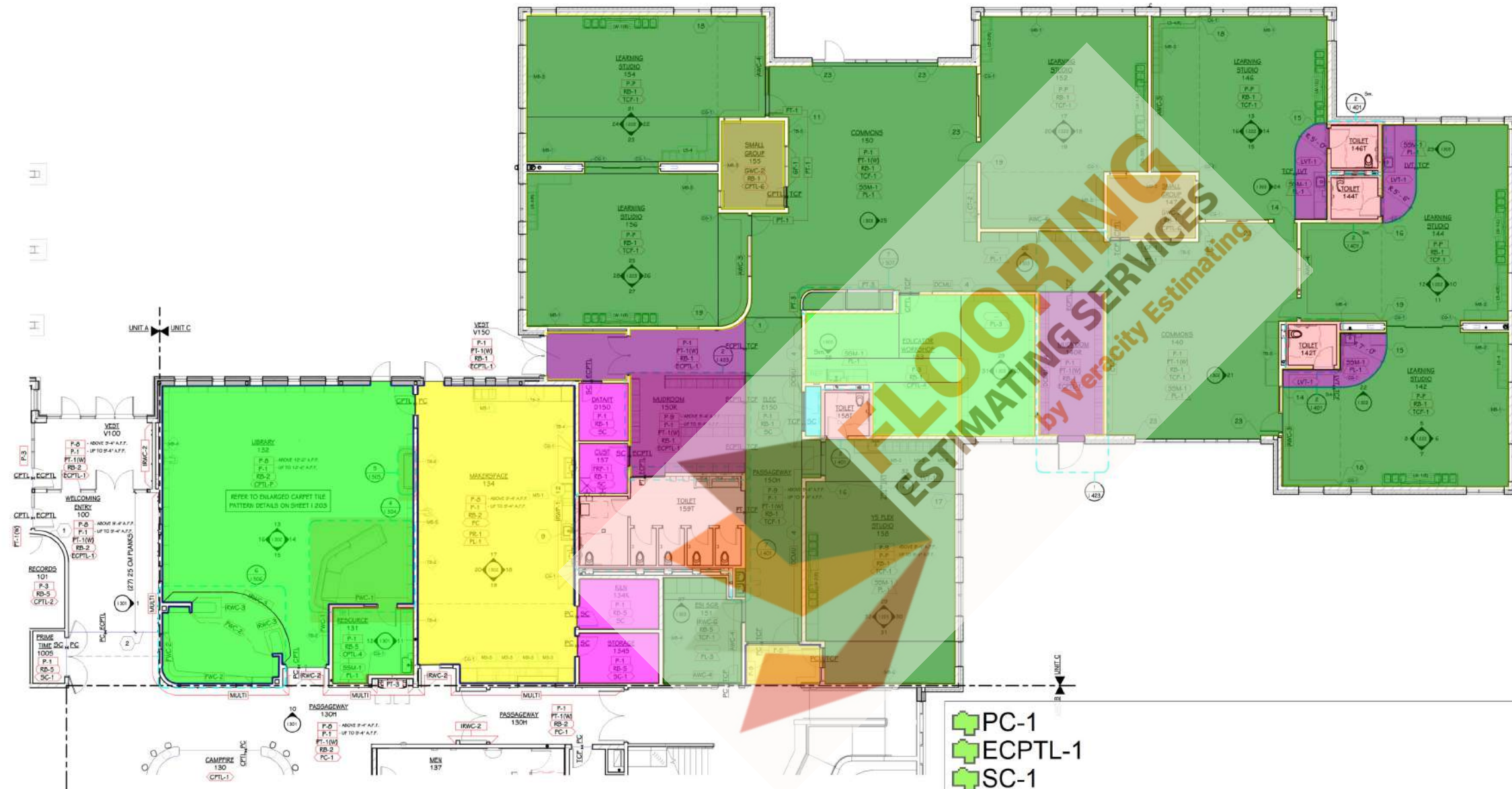
- 1,513.2 FT
- 8,851.9 SQ FT
- 472.2 FT
- 376.6 FT
- 1,203.5 SQ FT
- 1,234.4 SQ FT
- 3,247.5 SQ FT
- 1,093.8 SQ FT
- 38.7 SQ FT
- 138.5 SQ FT
- 81.5 SQ FT
- 36.4 SQ FT
- 138.2 SQ FT
- 99.0 FT

INTERIOR - GENERAL NOTES - FINISH PLANS	
FINISH TAGS APPLY TO LIKE MATERIALS IN ENTIRE ROOM. I.E. CASEWORK TAG MAY ONLY CALLOUT ONE RUN OF CASEWORK, BUT ALL CASEWORK IN ROOM RECEIVE THE SAME FINISHES, UNLESS TAGGED DIFFERENTLY.	
REFER TO ENLARGED FINISH PLANS AND PATTERN PLANS FOR ADDITIONAL FINISH DETAILS.	
DASHED LINES INDICATE LINE OF CEILING ABOVE, REFER TO REFLECTED CEILING PLANS.	
CASEWORK FINISH TAGS DO NOT APPLY TO CUSTOM MILLWORK PIECES. REFER TO ENLARGED MILLWORK DETAILS FOR FINISH MATERIALS.	
CASEWORK FINISH TAGS DO NOT APPLY TO EDUCATIONAL CASEGOOD PIECES. REFER TO TAGS AND SPECIFICATIONS FOR ADDITIONAL INFORMATION ON TYPE AND FINISH.	
PORCELAIN TILE WAINSCOT IS NOT REQUIRED BEHIND STUDENT CUBBIES.	
AT ALL AREAS OF EXPOSED CEILING, CEILING DATUM TO BE HELD AT 9'-4" AFF, UNLESS OTHERWISE NOTED. ALL INFRASTRUCTURE TO BE HELD ABOVE THIS DATUM, REFER TO REFLECTED CEILING PLAN AND NOTES FOR PAINTING SCOPE AND INTENT.	
HALFTONE RESIDENTIAL AND BUSINESS EQUIPMENT TO BE OWNER FURNISHED.	
PRIOR - KEYED NOTES - FINISH PLAN	
WHERE RADIIUSED WALLS ARE INDICATED TO BE PT-1(W), PROVIDE PT-2 COORDINATING MOSAIC AS REQUIRED TO WRAP TO NEAREST FLAT SURFACE. ALIGN ALL GROUT JOINTS.	
ALIGN FLOORING TRANSITION AS INDICATED.	
CONTINUE PORCELAIN TILE WAINSCOT PT-1(W) INTO RETURN/VAMIES.	
DO NOT APPLY PAINT OR PORCELAIN TILE WAINSCOT TO DECORATIVE CONCRETE, MASONRY WALLS, TYPICAL.	
FRP PANELS TO BE INSTALLED ABOVE RUBBER BASE, INSTALL FULL SHEET VERTICALLY ORIENTED.	
ACID-RESISTANT GYPSUM BOARD PROJECTION SURFACE WITH LEVEL 3 FINISH WITH WATERED DARK BRONZE ANOXIZED J-CHANNEL FRAME. REFER TO ELEVATION.	
7. VERIFY FINISH EXTENTS WITH FOOD SERVICE EQUIPMENT PRIOR TO INSTALLATION.	
8. 36" WIDE X 24" DEEP ADJUSTABLE PR-1 SHELVING ON WALL STANDARDS.	
9. 36" WIDE X 12" DEEP ADJUSTABLE PR-1 SHELVING ON WALL STANDARDS.	
10. MEDIUM-GROUND POLISHED CONCRETE INFILL IN METAL PAN STAIRS, PROVIDE (2) INSET STAINLESS STEEL BARS AT NOSING OF EACH STAIR TREAD.	
11. PROVIDE CONTINUOUS, MITERED FURRING STRIPS ABOVE WAINSCOT FOR FLUSH AND FLAT TACKBOARD INSTALLATION, CAULK ALL JOINTS AND PAINT TO MATCH WALL.	
12. SMOKE/COAT CHAU WALL AS REQUIRED FOR SMOOTH IRMP-1 INSTALLATION, REFER TO ELEVATION FOR EXTENTS.	
13. METAL LOCKERS, REFER TO ARCHITECTURAL.	
14. ALIGN FLOORING TRANSITION TO DOOR FRAME.	
15. ALIGN FLOORING TRANSITION TO CABINET EDGE/CORNER.	
16. ALIGN FLOORING TRANSITION TO CORNER.	
17. ALIGN FLOORING TRANSITION TO WINDOW.	
18. WHERE FURRED WALLS WITH ACOUSTIC WALLCOVERING TERMINATE, PAINT RETURN P-1 UNLESS NOTED OTHERWISE.	
19. WHERE ACOUSTIC WALLCOVERING TERMINATES ALONG A FLAT SURFACE, PROVIDE FRP RESIST TERMINATION TRIM ALIGNED TO OUTSIDE FACE OF DULHEAD TO CAPTURE EXPOSED EDGE OF AWC.	
20. PROVIDE CONTRASTING RESILIENT ACCENT STRIP AT TOP AND BOTTOM OF RAMP.	
21. SOLID SURFACE CAP AND WATERFALL EDGE, SSAM-1 - REFER TO DETAILS.	
22. SOLID SURFACE CAP, SSAM-1 - REFER TO DETAILS.	
23. RETURN FURRING AND TILE TO FRAME.	
24. FRP TO WRAP OPENINGS.	
25. 1" THICK UNIT CHROMA PIN PARTITION, RP-2.	

FIRST FLOOR FINISH PLAN - UNIT B
1/8" = 1'-0"

THIS DRAWING SHEET IS INTENDED TO BE PLOTTED IN COLOR. IF THIS TEXT APPEARS IN BLACK AND WHITE, IT IS PLOTTED INCORRECTLY. DISCARD AND OBTAIN AN ACCURATE DRAWING





FIRST FLOOR FINISH PLAN - UNIT C
1/8" = 1'-0"

- PC-1
- ECPTL-1
- SC-1
- CPTL-4
- TCF-1
- RST-1 7P
- CPTL-6
- RB-2
- RB-1
- RB-5
- Floor Transition strip
- LVT-1
- Transition Floor

- ### INTERIOR - GENERAL NOTES - FINISH PLANS
- FINISH TAGS APPLY TO LIKE MATERIALS IN ENTIRE ROOM. I.E. CASEWORK TAG MAY ONLY CALLOUT ONE RUN OF CASEWORK, BUT ALL CASEWORK IN ROOM RECEIVE THE SAME FINISHES, UNLESS TAGGED DIFFERENTLY.
 - REFER TO ENLARGED FINISH PLANS AND PATTERN PLANS FOR ADDITIONAL FINISH DETAILS.
 - DASHED LINES INDICATE LINE OF CEILING ABOVE, REFER TO REFLECTED CEILING PLANS.
 - CASEWORK FINISH TAGS DO NOT APPLY TO CUSTOM MILLWORK PIECES. REFER TO ENLARGED MILLWORK DETAILS FOR FINISH MATERIALS.
 - CASEWORK FINISH TAGS DO NOT APPLY TO EDUCATIONAL CASEGOOD PIECES. REFER TO TAGS AND SPECIFICATIONS FOR ADDITIONAL INFORMATION ON TYPE AND FINISH.
 - PORCELAIN TILE WAINSCOT IS NOT REQUIRED BEHIND STUDENT CUBBIES.
 - AT ALL AREAS OF EXPOSED CEILING, CEILING DATUM TO BE HELD AT 9'-4" AFF, UNLESS OTHERWISE NOTED. ALL INFRASTRUCTURE TO BE HELD ABOVE THIS DATUM, REFER TO REFLECTED CEILING PLAN AND NOTES FOR PAINTING SCOPE AND INTENT.
 - HALFTONE RESIDENTIAL AND BUSINESS EQUIPMENT TO BE OWNER FURNISHED.
- ### INTERIOR - KEYED NOTES - FINISH PLAN
- WHERE RADIIUSED WALLS ARE INDICATED TO BE PT-1(W), PROVIDE PT-2 COORDINATING MOSAIC AS REQUIRED TO WRAP TO NEAREST FLAT SURFACE. ALIGN ALL GROUT JOINTS.
 - ALIGN FLOORING TRANSITION AS INDICATED.
 - CONTINUE PORCELAIN TILE WAINSCOT PT-1(W) INTO RETURNS/JAMBS.
 - DO NOT APPLY PAINT OR PORCELAIN TILE WAINSCOT TO DECORATIVE CONCRETE, MASONRY WALLS, TYPICAL.
 - FRP PANELS TO BE INSTALLED ABOVE RUBBER BASE, INSTALL FULL SHEET VERTICALLY ORIENTED.
 - ABUSE-RESISTANT GYPSUM BOARD PROJECTION SURFACE WITH LEVEL 3 FINISH WITH WATERED DARK BRONZE ANCOZED J-CHANNEL REFER TO ELEVATION.
 - VERIFY FINISH EXTENTS WITH FOOD SERVICE EQUIPMENT PRIOR TO INSTALLATION.
 - 36" WIDE X 24" DEEP ADJUSTABLE PR-1 SHELVING ON WALL STANDARDS.
 - 36" WIDE X 12" DEEP ADJUSTABLE PR-1 SHELVING ON WALL STANDARDS.
 - MEDIUM-GROUND POLISHED CONCRETE (MPL) IN METAL PAN STAIRS, PROVIDE (2) INSET STAINLESS STEEL BARS AT NOSING OF EACH STAIR TREAD.
 - PROVIDE CONTINUOUS, MITERED FURRING STRIPS ABOVE WAINSCOT FOR FLUSH AND FLAT TACKBOARD INSTALLATION, CAULK ALL JOINTS AND PAINT TO MATCH WALL.
 - SKIMCOAT CMU WALL AS REQUIRED FOR SMOOTH IRMP-1 INSTALLATION, REFER TO ELEVATION FOR EXTENTS.
 - METAL LOCKERS, REFER TO ARCHITECTURAL.
 - ALIGN FLOORING TRANSITION TO DOOR FRAME.
 - ALIGN FLOORING TRANSITION TO CABINET EDGE/CORNER.
 - ALIGN FLOORING TRANSITION TO CORNER.
 - ALIGN FLOORING TRANSITION TO WINDOW.
 - WHERE FURRED WALLS WITH ACOUSTIC WALLCOVERING TERMINATE, PAINT RETURN P-1 UNLESS NOTED OTHERWISE.
 - WHERE ACOUSTIC WALLCOVERING TERMINATES ALONG A FLAT SURFACE, PROVIDE FRP RESIST TERMINATION TRIM ALIGNED TO OUTSIDE FACE OF DULHEAD TO CAPTURE EXPOSED EDGE OF AWC.
 - PROVIDE CONTRASTING RESILIENT ACCENT STRIP AT TOP AND BOTTOM OF RAMP.
 - SOLID SURFACE CAP AND WATERFALL EDGE, SSM-1 - REFER TO DETAILS.
 - SOLID SURFACE CAP, SSM-1 - REFER TO DETAILS.
 - RETURN FURRING AND TILE TO FRAME.
 - FRP TO WRAP OPENINGS.
 - 1" THICK UNILUX CHROMA FIN PARTITION, RP-2.

ISSUED FOR

DATE

PROJECT TITLE
WOODLAND ELEMENTARY SCHOOL

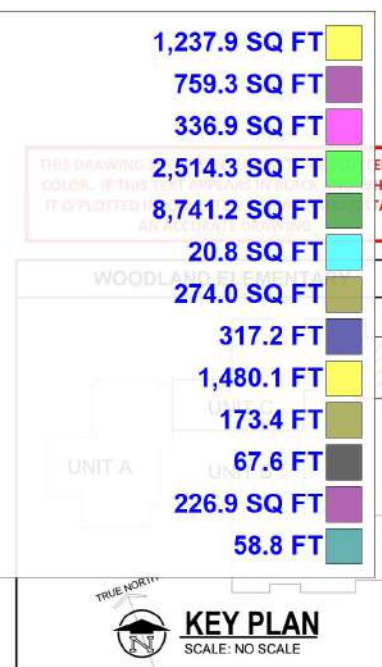
OWNER
PORTAGE PUBLIC SCHOOLS

SHEET TITLE
FIRST FLOOR FINISH PLAN - UNIT C

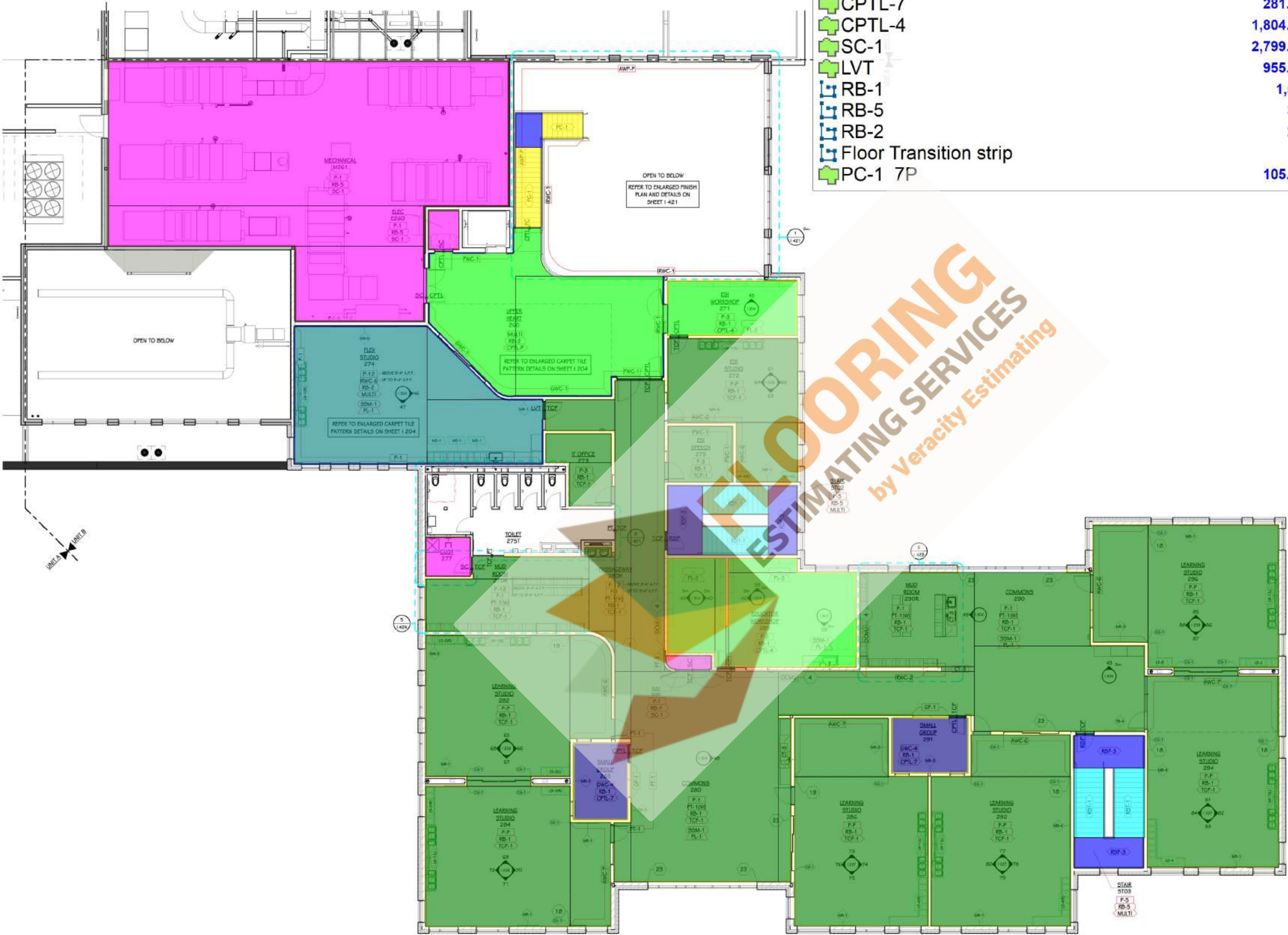
Portage, Michigan

DATE
NOVEMBER 15, 2024

SHEET NUMBER
I 101C
21-237.50



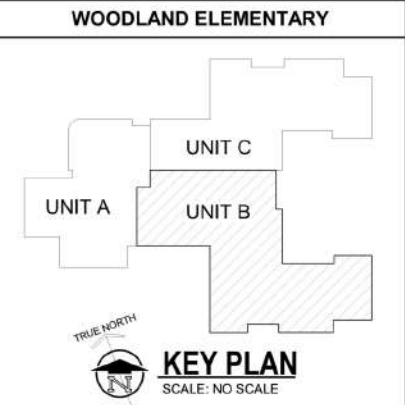
KEY PLAN
SCALE: NO SCALE



- INTERIOR - GENERAL NOTES - FINISH PLANS**
- 1 FINISH TAGS APPLY TO LIKE MATERIALS IN ENTIRE ROOM. I.E. CASEWORK TAG MAY ONLY CALLOUT ONE RUN OF CASEWORK, BUT ALL CASEWORK IN ROOM RECEIVE THE SAME FINISHES, UNLESS TAGGED DIFFERENTLY.
- ENLARGED FINISH PLANS AND PATTERN PLANS FOR ADDITIONAL FINISH
- 2 FINISH TAGS DO NOT APPLY TO CUSTOM MILLWORK PIECES. REFER TO MILLWORK DETAILS FOR FINISH MATERIALS.
- 3 FINISH TAGS DO NOT APPLY TO EDUCATIONAL CASEGOOD PIECES. REFER TO SPECIFICATIONS FOR ADDITIONAL INFORMATION ON TYPE AND FINISH.
- 4 IN TILE WAINSCOT IS NOT REQUIRED BEHIND STUDENT CUBBIES.
- 5 LEAS OF EXPOSED CEILING, CEILING DATUM TO BE HELD AT 9'-4" AFF. UNLESS SE NOTED. ALL INFRASTRUCTURE TO BE HELD ABOVE THIS DATUM. REFER TO CEILING PLAN AND NOTES FOR PAINTING SCOPE AND INTENT.
- 6 RESIDENTIAL AND BUSINESS EQUIPMENT TO BE OWNER FURNISHED.
- KEYED NOTES - FINISH PLAN**
- 7 ADJUSED WALLS ARE INDICATED TO BE PT-1(W), PROVIDE PT-2 COORDINATING AS REQUIRED TO WRAP TO NEAREST FLAT SURFACE. ALIGN ALL GROUT JOINTS.
- 8 DORING TRANSITION AS INDICATED.
- 9 PORCELAIN TILE WAINSCOT PT-1(W) INTO RETURN/STAIRS.
- 10 APPLY PAINT OR PORCELAIN TILE WAINSCOT TO DECORATIVE CONCRETE WALLS, TYPICAL.
- 11 FRP PANELS TO BE INSTALLED ABOVE RUBBER BASE, INSTALL FULL SHEET VERTICALLY ORIENTED.
- 12 ADUSE-RESISTANT GYPSUM BOARD PROJECTION SURFACE WITH LEVEL 3 FINISH WITH WATERED DARK BRONZE ANCOOZED J-CHANNEL FRAME. REFER TO ELEVATION.
- 13 VERIFY FINISH EXTENTS WITH FOOD SERVICE EQUIPMENT PRIOR TO INSTALLATION.
- 14 36" WIDE X 24" DEEP ADJUSTABLE PR-1 SHELVING ON WALL STANDARDS.
- 15 36" WIDE X 12" DEEP ADJUSTABLE PR-1 SHELVING ON WALL STANDARDS.
- 16 MEDIUM-GROUND POLISHED CONCRETE (FILL IN METAL PAN STAIRS, PROVIDE (2) INSET STAINLESS STEEL BARS AT NOSING OF EACH STAIR TREAD.
- 17 PROVIDE CONTINUOUS, MITERED PURRING STRIPS ABOVE WAINSCOT FOR FLUSH AND FLAT TACKBOARD INSTALLATION, CAULK ALL JOINTS AND PAINT TO MATCH WALL.
- 18 SKIMCOAT CMU WALL AS REQUIRED FOR SMOOTH IRMP-1 INSTALLATION, REFER TO ELEVATION FOR EXTENTS.
- 19 METAL LOCKERS, REFER TO ARCHITECTURAL.
- 20 ALIGN FLOORING TRANSITION TO DOOR FRAME.
- 21 ALIGN FLOORING TRANSITION TO CABINET EDGE/CORNER.
- 22 ALIGN FLOORING TRANSITION TO CORNER.
- 23 ALIGN FLOORING TRANSITION TO WINDOW.
- 24 WHERE FURRED WALLS WITH ACOUSTIC WALLCOVERING TERMINATE, PAINT RETURN P-1 UNLESS NOTED OTHERWISE.
- 25 WHERE ACOUSTIC WALLCOVERING TERMINATES ALONG A FLAT SURFACE, PROVIDE FRP RESIST TERMINATION TRIM ALIGNED TO OUTSIDE FACE OF DULHEAD TO CAPTURE EXPOSED EDGE OF AWC.
- 26 PROVIDE CONTRASTING RESILIENT ACCENT STRIP AT TOP AND BOTTOM OF RAMP.
- 27 SOLID SURFACE CAP AND WATERFALL EDGE, SSMA-1 - REFER TO DETAILS.
- 28 SOLID SURFACE CAP, SSMA-1 - REFER TO DETAILS.
- 29 RETURN PURRING AND TILE TO FRAME.
- 30 FRP TO WRAP OPENINGS.
- 31 1" THICK UNIT CHORDA PIN PARTITION, RP-2.

SECOND FLOOR FINISH PLAN - UNIT B
1/8" = 1'-0"

THIS DRAWING SHEET IS INTENDED TO BE PLOTTED IN COLOR. IF THIS TEXT APPEARS IN BLACK AND WHITE, IT IS PLOTTED INCORRECTLY. DISCARD AND OBTAIN AN ACCURATE DRAWING



ISSUED FOR

DATE

PROJECT TITLE
WOODLAND ELEMENTARY SCHOOL

OWNER
PORTAGE PUBLIC SCHOOLS

SHEET TITLE
SECOND FLOOR FINISH PLAN - UNIT B

Portage, Michigan

DATE
NOVEMBER 15, 2024

SHEET NUMBER
I 102B
21-237.50

NOTES - ENLARGED TOILET FINISH PLANS

1. REFER TO MATERIAL SELECTION SCHEDULE FOR FINISH INFORMATION.
2. REFER TO ARCHITECTURAL FLOOR PLANS AND SPECIFICATION FOR ADDITIONAL INFORMATION ON CONSTRUCTION MATERIALS.
3. REFER TO ARCHITECTURAL ENLARGED PLANS FOR TOILET ACCESSORIES, PARTITIONS, BARRIER-FREE REQUIREMENTS, ETC.
4. REFER TO REFLECTED CEILING PLANS FOR CEILING FINISH AND HEIGHTS.
5. REFER TO INTERIORS TYPICAL DETAIL SHEETS FOR TILE TRIM DETAILS, FLOORING TRANSITIONS, WAINSCOT DETAILS, AND TYPICAL TILE PATTERN REQUIREMENTS.
6. WHERE HEIGHT IS INDICATED FOR IMPACT RESISTANT WALL PANEL AND FIBERGLASS REINFORCED PLASTIC PANELING NOTED HEIGHT IS NOMINAL. CONTRACTOR TO PROVIDE FULL SHEET HEIGHT OR WIDTH ATOP SPECIFIED BASE HEIGHT PLUS ANY NECESSARY TRIMS OR ACCESSORIES.
7. DETAILS SHOWN ILLUSTRATE DESIGN INTENT, NOT ALL POSSIBLE CONDITIONS. FOR CONDITIONS NOT SHOWN, USE DETAILS CLOSEST TO CONDITION IN QUESTION.

KEYED NOTES - INTERIORS - ENLARGED TOILET FINISH PLANS

1. ADULT CHANGING TABLE, BY OWNER.
2. PROVIDE CONTINUOUS, MITERED PURKING STRIPS ABOVE WAINSCOT FOR FLUSH AND FLAT MIRROR INSTALLATION, CAULK ALL JOINTS AND PAINT TO MATCH WALL.
3. ALIGN FLOORING TRANSITION TO FACE OF ADJACENT WALL, TRANSITION FLOOR BASE PER TYPICAL DETAILS AS REQUIRED BY BASE INDICATED ON FINISH PLANS.
4. INSTALL LEFT DRINKING FOUNTAIN AT ADULT BARRIER-FREE HEIGHT.
5. INSTALL RIGHT DRINKING FOUNTAIN AT CHILD BARRIER-FREE HEIGHT.
6. EXTEND PORCELAIN TILE AND TILE TRIM TO INSIDE CORNER, COPE RESILIENT FLOOR COVE TO TILE.
7. SOLID SURFACE CAP, 95M-1 - REFER TO DETAILS.
8. CEILING-MOUNTED CUBICLE CURTAIN (CC-1) AND TRACK, REFER TO ARCHITECTURAL AND SPECIFICATION.
9. INSTALL RESILIENT SHEET FLOORING PER MANUFACTURER'S RECOMMENDATIONS, REDUCE SEAMS WHERE POSSIBLE.
10. FRP PANELS TO BE INSTALLED ABOVE RUBBER BASE, INSTALL FULL SHEET VERTICALLY ORIENTED.
11. ALIGN FLOORING TRANSITION TO EDGE OF DOOR FRAME, TRANSITION FLOOR BASE PER TYPICAL DETAILS.
12. EXTEND PORCELAIN TILE TO CURBRY TOP AND WATERFALL RETURN, OFFSET STACKED BOND VERTICAL JOINT TO AVOID VISIBLE SLIVERS IN TILE PATTERN.
13. PORCELAIN TILE BASE ALL FACES OF HANDWASHING AND DRINKING FOUNTAIN STATION, REFER TO DETAILS.

ISSUED FOR

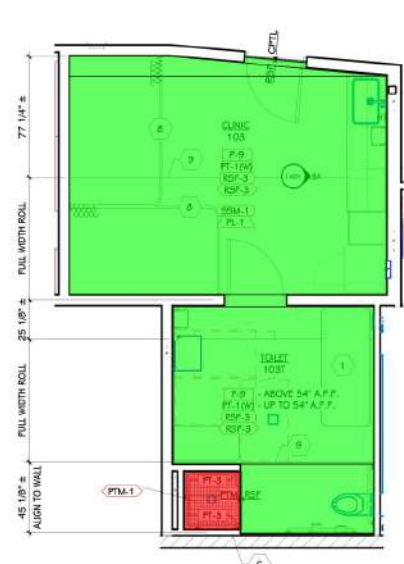
DATE



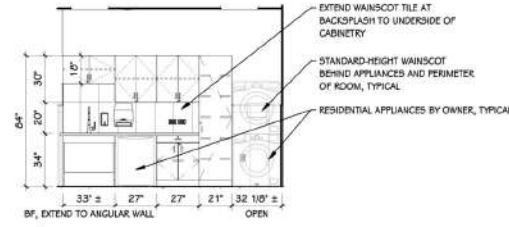
1 OFFICE TOILET ROOM 102T
1/4" = 1'-0"



2 TYPICAL IN-STUDIO TOILET ROOM
1/4" = 1'-0"



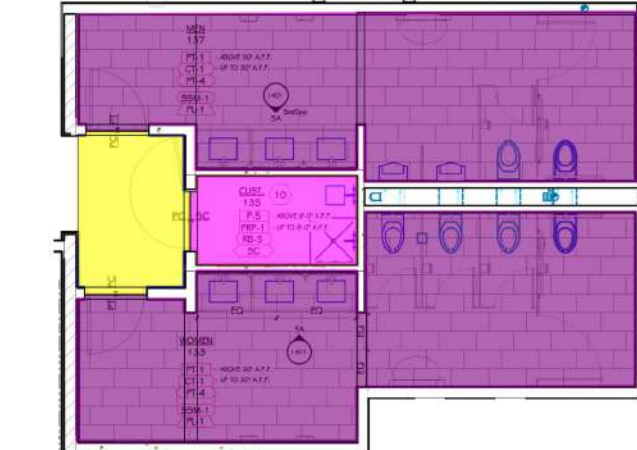
3 CLINIC TOILET AND SHOWER ROOM 103T
1/4" = 1'-0"



3A CLINIC 103 - EAST
1/4" = 1'-0"



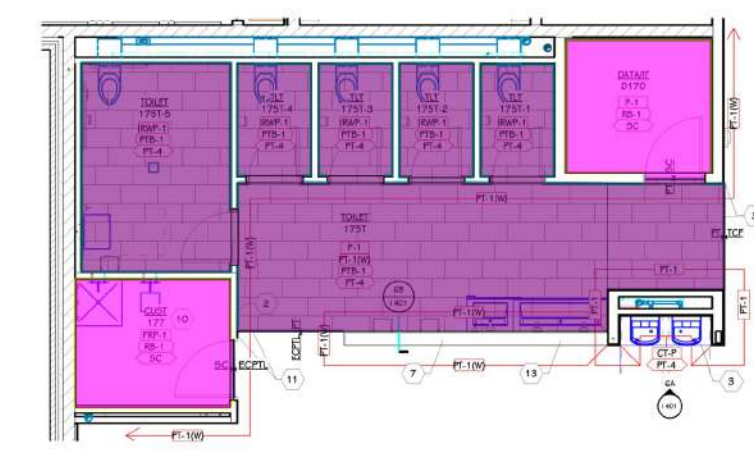
4 PUBLIC AND STAFF TOILET ROOM 112T
1/4" = 1'-0"



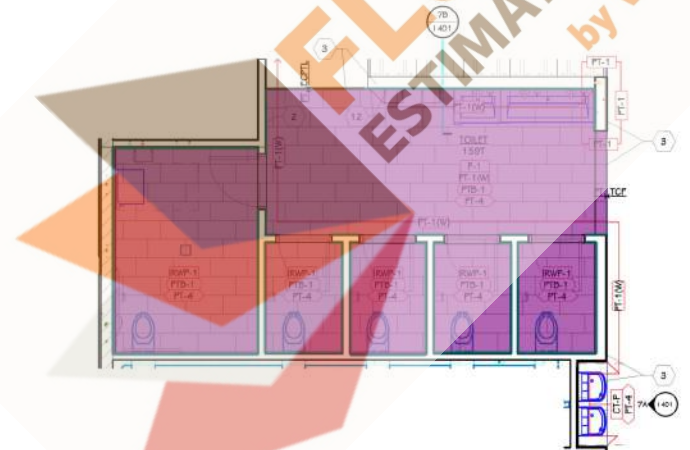
5 PUBLIC TOILET ROOMS 133 & 137
1/4" = 1'-0"



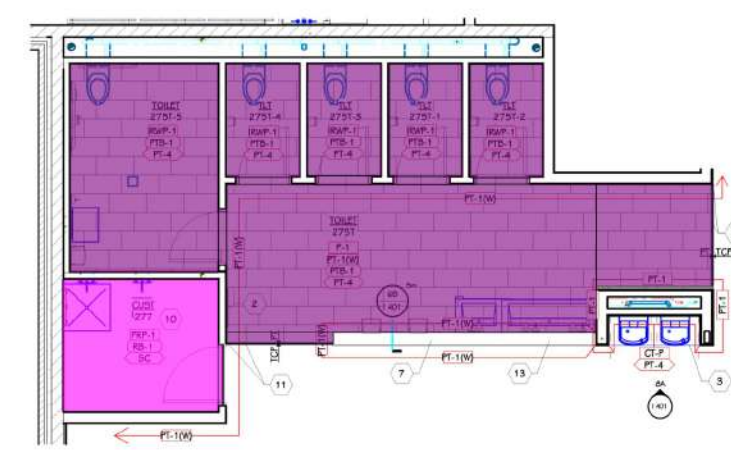
5A 133 WOMEN - SINK
1/4" = 1'-0"



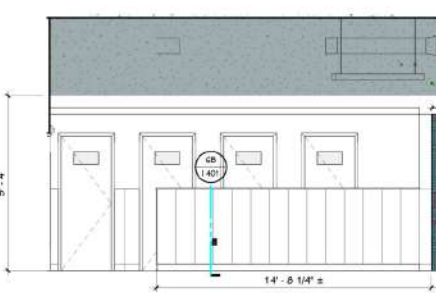
6 STUDENT TOILET ROOM 175T
1/4" = 1'-0"



7 STUDENT TOILET ROOM 159T
1/4" = 1'-0"

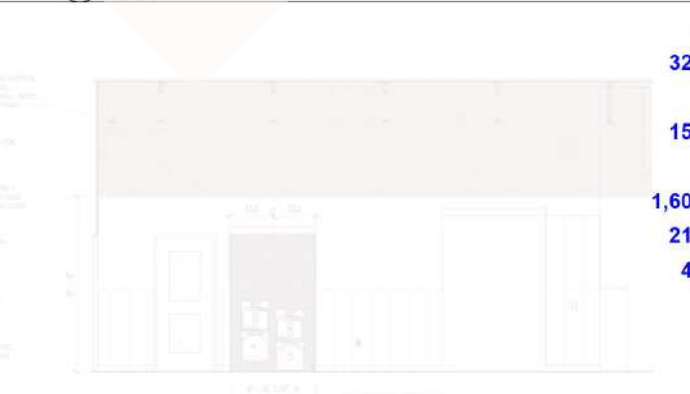


8 STUDENT TOILET ROOM 275T
1/4" = 1'-0"



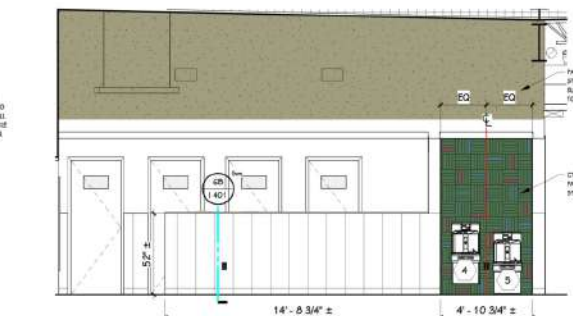
6A TOILET 175T - SOUTH
1/4" = 1'-0"

- PTM-1
- RSF-3
- Floor Transition strip
- PT-4
- CT-1 2'-6"H Wall
- PT-4
- SC-1
- PC-1
- RB-2
- RB-5
- PTB-1
- RB-1
- RSF-4 (4 EA)
- Floor Transition strip (4 EA)



7A TOILET ROOM 159T - EAST
1/4" = 1'-0"

- 9.3 SQ FT
- 329.4 SQ FT
- 63.2 FT
- 152.9 SQ FT
- 231.7 FT
- 1,600.3 SQ FT
- 213.9 SQ FT
- 48.9 SQ FT
- 12.4 FT
- 23.4 FT
- 246.8 FT
- 53.4 FT
- 49.5 SQ FT
- 3.3 FT



6A TOILET 275 - SOUTH
1/4" = 1'-0"

THIS DRAWING SHEET IS INTENDED TO BE PLOTTED IN COLOR. IF THIS TEXT APPEARS IN BLACK AND WHITE, IT IS PLOTTED INCORRECTLY. DISCARD AND OBTAIN AN ACCURATE DRAWING

INTERIOR - GENERAL NOTES - FINISH PLANS

1. FINISH TAGS APPLY TO LIKE MATERIALS IN ENTIRE ROOM. I.E. CASEWORK TAG MAY ONLY CALLOUT ONE RUN OF CASEWORK, BUT ALL CASEWORK IN ROOM RECEIVE THE SAME FINISHES, UNLESS TAGGED DIFFERENTLY.
2. REFER TO ENLARGED FINISH PLANS AND PATTERN PLANS FOR ADDITIONAL FINISH DETAILS.
3. DASHED LINES INDICATE LINE OF CEILING ABOVE, REFER TO REFLECTED CEILING PLANS.
4. CASEWORK FINISH TAGS DO NOT APPLY TO CUSTOM MILLWORK PIECES. REFER TO ENLARGED MILLWORK DETAILS FOR FINISH MATERIALS.
5. CASEWORK FINISH TAGS DO NOT APPLY TO EDUCATIONAL CASEGOOD PIECES. REFER TO TAGS AND SPECIFICATIONS FOR ADDITIONAL INFORMATION ON TYPE AND FINISH.

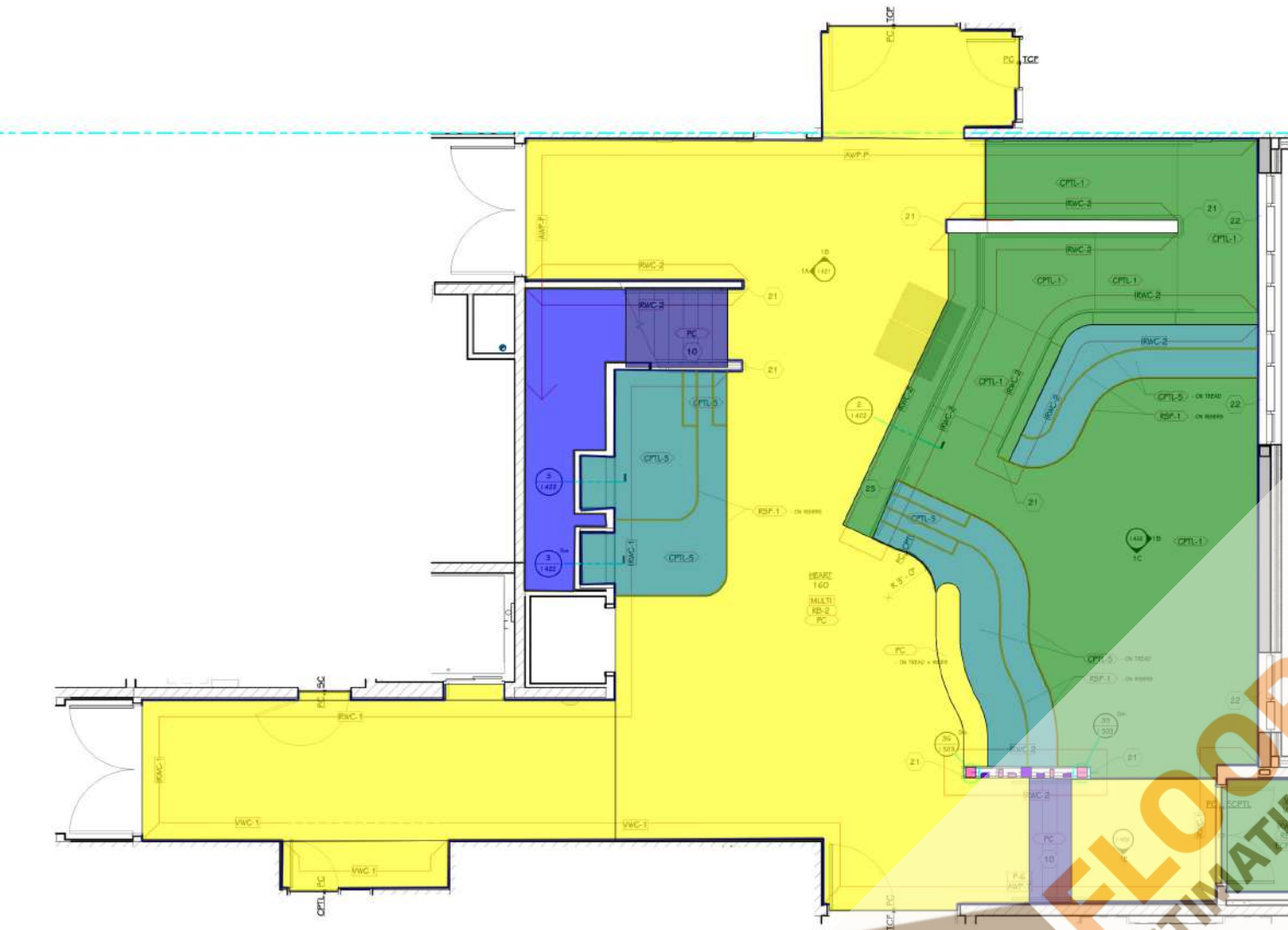
50.3 FT	10 STUDENT CUBBIES.
1,319.6 SQ FT	TO BE HELD AT 9'-4" AFF, UNLESS SHOWN OTHERWISE.
636.8 SQ FT	TO BE OWNER FURNISHED.
261.1 SQ FT	TO PROVIDE PT-2 COORDINATING SURFACE. ALIGN ALL GROUT JOINTS.
134.6 FT	RETURNS/JAMBES.
51.7 SQ FT	TO DECORATIVE CONCRETE.
59.4 SQ FT	INSTALL FULL SHEET VERTICALLY.
185.5 FT	REFACE WITH LEVEL 3 FINISH WITH 1/8" J.E. REFER TO ELEVATION.
85.3 SQ FT	MENT PRIOR TO INSTALLATION.
49.8 FT	ON WALL STANDARDS.
78.2 FT	ON WALL STANDARDS.
	AL PAN STAIRS, PROVIDE (2) INSET TREAD.
	ABOVE WAINSCOT FOR FLUSH AND FLAT TACKBOARD INSTALLATION; CAULK ALL JOINTS AND PAINT TO MATCH WALL.

12. SKIMCOAT CHU WALL AS REQUIRED FOR SMOOTH IRWP-1 INSTALLATION, REFER TO ELEVATION FOR DETAILS.
13. METAL LOCKERS, REFER TO ARCHITECTURAL.
14. ALIGN FLOORING TRANSITION TO DOOR FRAME.
15. ALIGN FLOORING TRANSITION TO CABINET EDGE/CORNER.
16. ALIGN FLOORING TRANSITION TO CORNER.
17. ALIGN FLOORING TRANSITION TO WINDOW.
18. WHERE FURRED WALLS WITH ACOUSTIC WALLCOVERING TERMINATE, PAINT RETURN P-1 UNLESS NOTED OTHERWISE.
19. WHERE ACOUSTIC WALLCOVERING TERMINATES ALONG A FLAT SURFACE, PROVIDE FRY RESIST TERMINATION TRIM ALIGNED TO OUTSIDE FACE OF BULKHEAD TO CAPTURE EXPOSED EDGE OF AWC.
20. PROVIDE CONTRASTING RESILIENT ACCENT STRIP AT TOP AND BOTTOM OF RAMP.
21. SOLID SURFACE CAP AND WATERFALL EDGE, 50M-1 - REFER TO DETAILS.
22. SOLID SURFACE CAP, 50M-1 - REFER TO DETAILS.
23. RETURN FURRING AND TILE TO FRAME.
24. FRP TO WRAP OPENINGS.
25. 1" THICK UNLIT CHROMA FIN PARTITION, RP-2.

INTERIOR - LEGEND - ACOUSTICAL WALL PANEL ELEVATIONS				
AWP-1	AWP-2	AWP-3		
AWC-3	AWC-4	AWC-5		

WHERE INDICATED BETWEEN ACOUSTICAL WALL PANELS, INSTALL IRWC-2 WRAPPED AROUND 2" PLYWOOD SUBSTRATE - BEVEL EDGES TO MATCH ADJACENT AWP

- Floor Transition strip
- PC-1
 - CPTL-1
 - CPTL-5
 - RSF-1 7"H Riser
 - PC-1 7P
 - ECPTL-1
 - RB-2
 - RSF-3
 - RB-5
 - RB-2



1 ENLARGED FINISH PLAN - HEART
1/4" = 1'-0"



1A HEART 160 - WEST
1/4" = 1'-0"



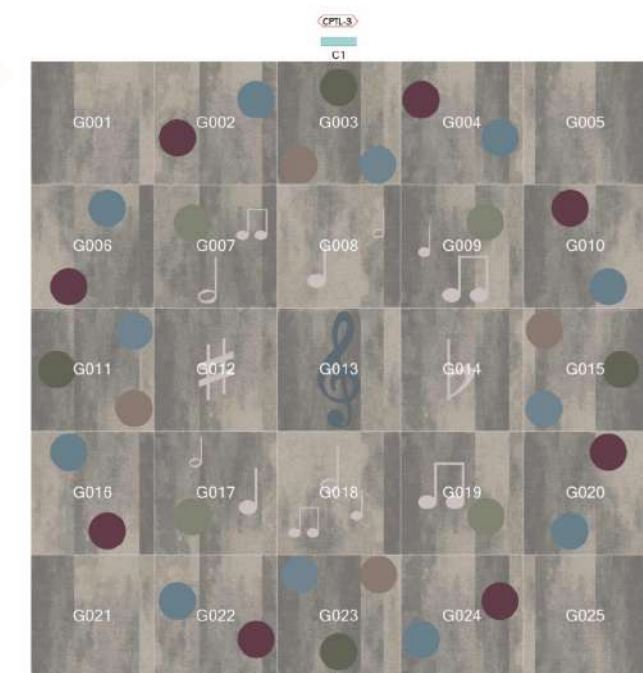
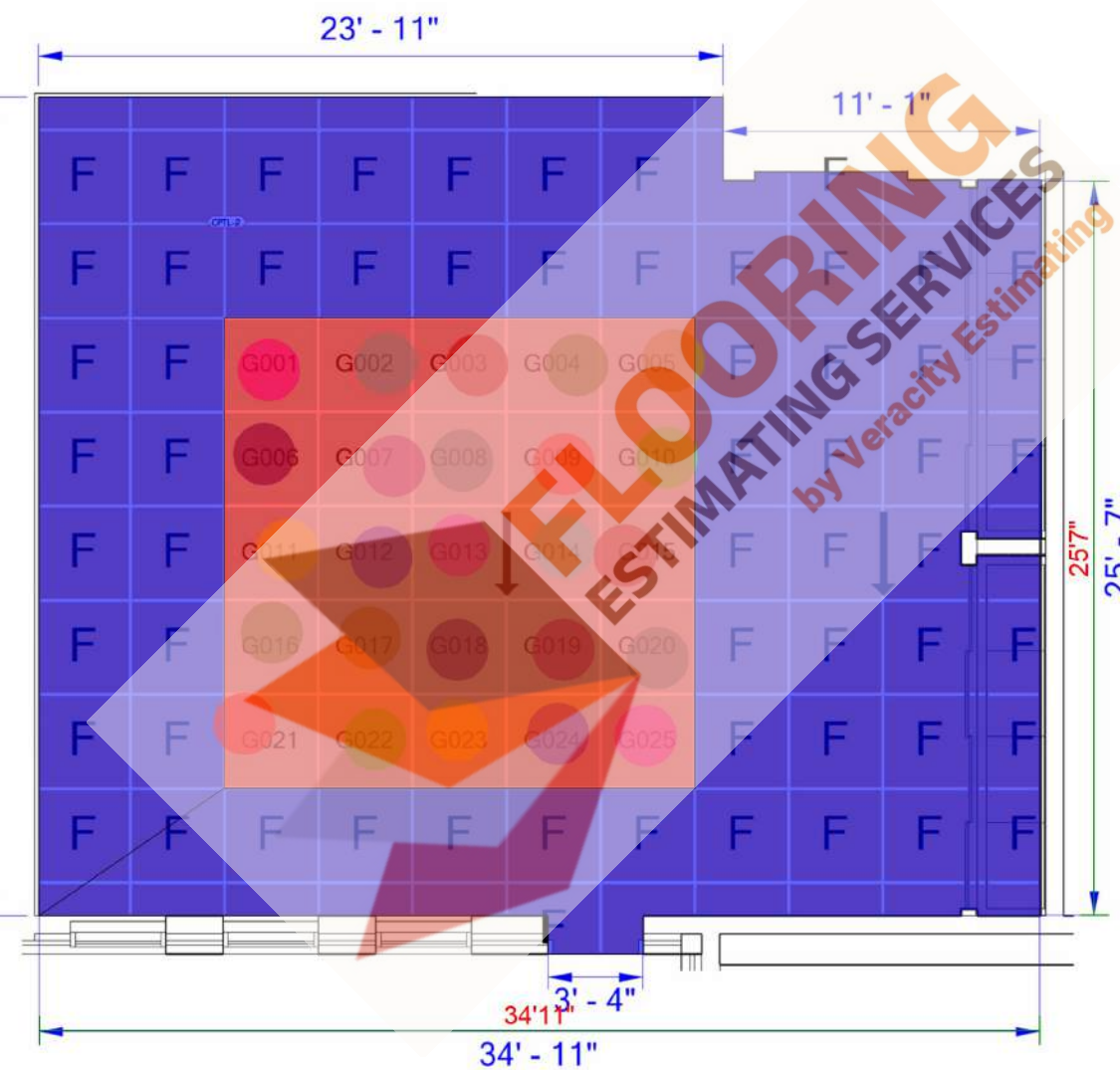
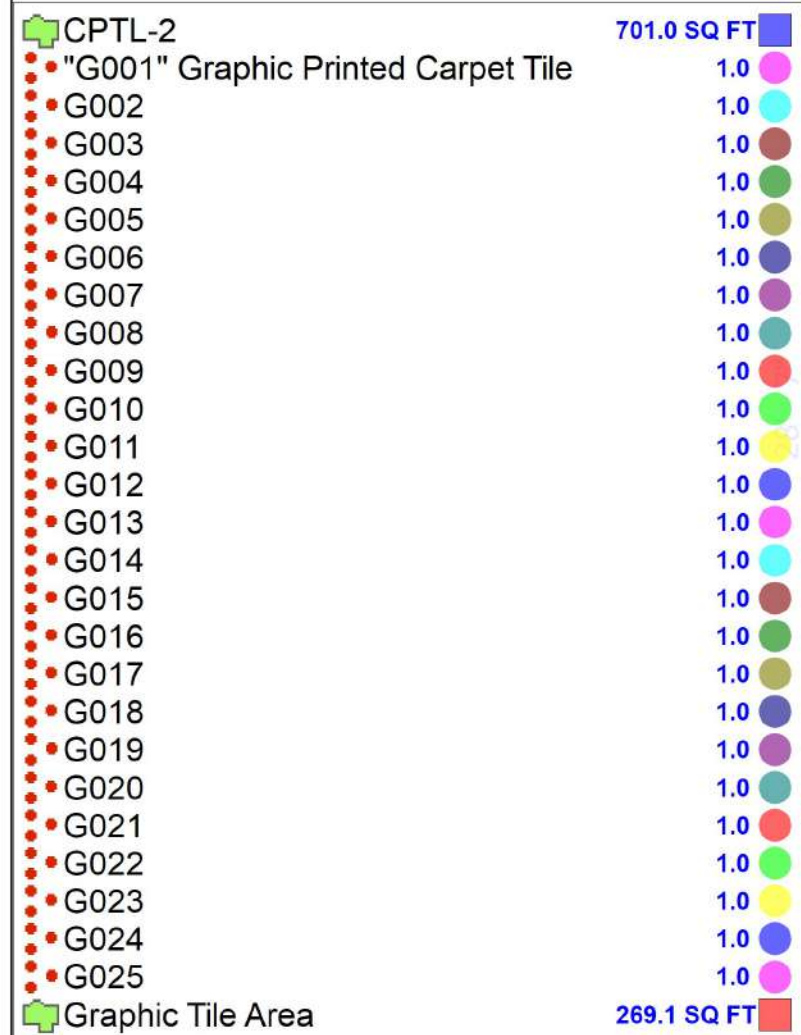
1B HEART 160 - NORTH
1/4" = 1'-0"

THIS DRAWING SHEET IS INTENDED TO BE PLOTTED IN COLOR. IF THIS TEXT APPEARS IN BLACK AND WHITE, IT IS PLOTTED INCORRECTLY. DISCARD AND OBTAIN AN ACCURATE DRAWING

MUSIC ROOM

INTERIOR - GENERAL NOTES - PATTERN PLANS	
1	REFER TO FINISH PLANS AND MATERIAL SELECTION SCHEDULE FOR MATERIAL TYPE, DESIGNATIONS AND RELATED SCOPE REQUIREMENTS.
2	VERIFY ALL DIMENSIONS IN THE FIELD AND ALERT ARCHITECT OF ANY CONFLICTS PRIOR TO BEGINNING WORK.
3	COORDINATE MARKING DIMENSIONS WITH FINAL APPROVED GYMNASIUM EQUIPMENT, SUBMITTALS AND OFFICIAL STATE-RECOGNIZED COMPETITION MARKING STANDARDS.
4	ARCHITECT TO SELECT MARKING COLORS FROM MANUFACTURERS FULL RANGE OF STANDARD, DESIGNER, AND CUSTOM COLOR OFFERINGS.
5	MANUFACTURERS INSTALLATION DIAGRAM PROVIDED FOR REFERENCE ONLY, VALIDATE PLAN CONDITIONS MATCH ARCHITECTURAL DRAWINGS PRIOR TO ORDERING.
6	MANUFACTURERS REFERENCE NUMBER PROVIDED IN MATERIAL SELECTION SCHEDULE FOR CUSTOM GRAPHIC PRINTED CARPET TILE.
7	INSTALLATION OF FINISH MATERIAL AND PATTERN SHALL EXTEND UNDER ALL OPEN CABINETS AND COUNTERTOPS.

THIS DRAWING SHEET IS INTENDED TO BE PLOTTED IN
COLOR. IF THIS TEXT APPEARS IN BLACK AND WHITE,
IT IS PLOTTED INCORRECTLY. DISCARD AND OBTAIN
AN ACCURATE DRAWING



↓ Indicates arrow direction on back of tiles.
La flecha indica la dirección de la fibra.

Portage Woodland Elementary
November 1, 2024
OP-000283637



SALES REP:
Kathy Cain
kathy.cain@milliken.com

ENVISIONED BY
Katie Elmore
katie.elmore@milliken.com

**VISION
LAB**
Concept. Collaborate. Create.

Milliken™

ISSUED FOR	DATE
------------	------

PROJECT TITLE
WOODLAND ELEMENTARY SCHOOL

OWNER
PORTAGE PUBLIC SCHOOLS

SHEET TITLE
PATTERN PLAN - MUSIC CARPET TILE
INSTALLATION

...the ...

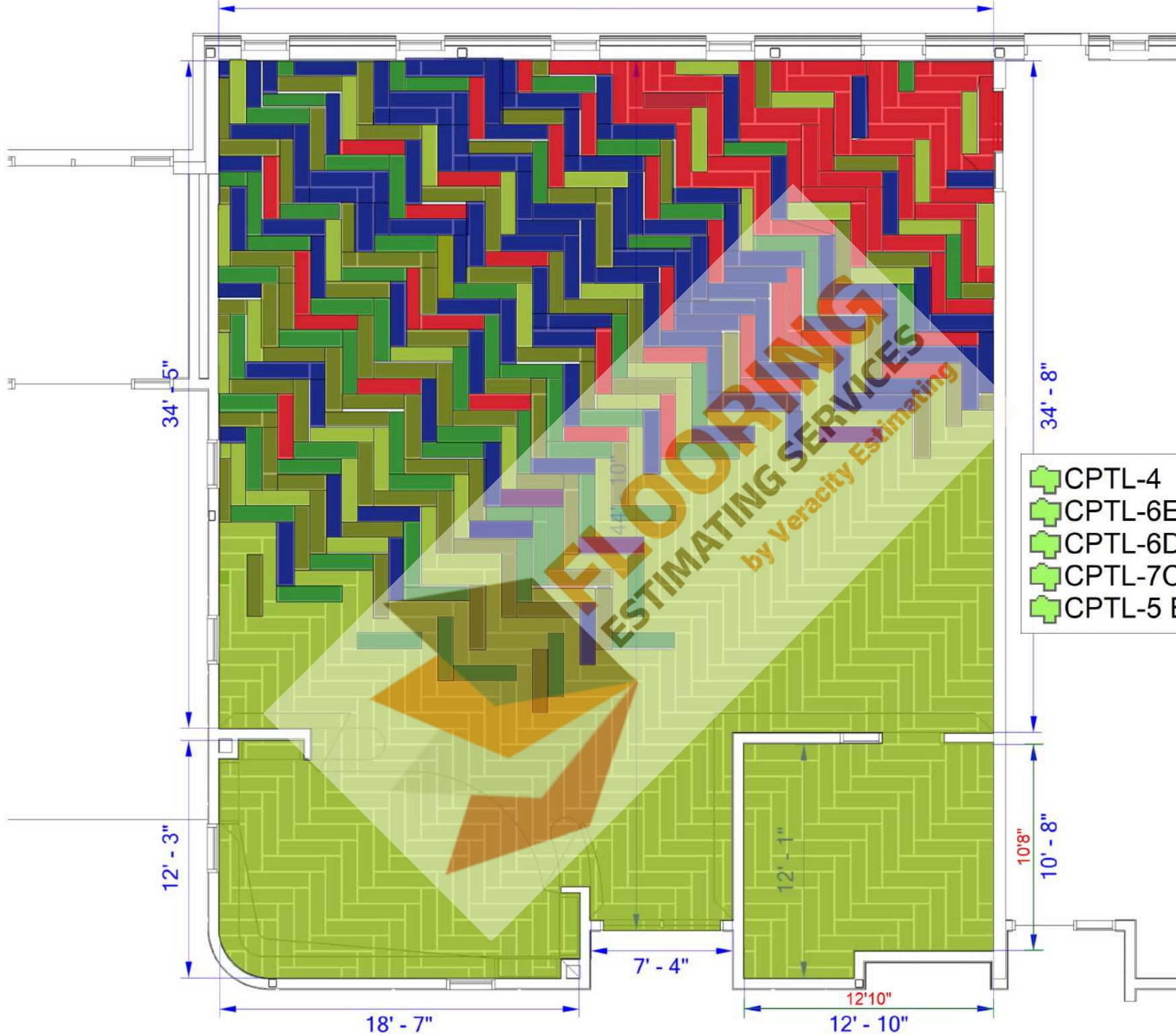
DATE NOVEMBER 15, 2024

SHEET NUMBER
1202
21-237.50

TowerPinkster
Architecture · Engineering · Interiors
towerpinkster.com
© 2024. ALL RIGHTS RESERVED

LIBRARY

40' - 0"



- INTERIOR - GENERAL NOTES - PATTERN PLANS
1. REFER TO FINISH PLANS AND MATERIAL SELECTION SCHEDULE FOR MATERIAL TYPE DESIGNATIONS AND RELATED SCOPE REQUIREMENTS.
 2. VERIFY ALL DIMENSIONS IN THE FIELD AND ALERT ARCHITECT OF ANY CONFLICTS PRIOR TO BEGINNING WORK.
 3. COORDINATE MARKING DIMENSIONS WITH FINAL APPROVED GYMNASIUM EQUIPMENT, SUBMITTALS AND OFFICIAL STATE-RECOGNIZED COMPETITION MARKING STANDARDS.
 4. ARCHITECT TO SELECT MARKING COLORS FROM MANUFACTURERS FULL RANGE OF STANDARD, DESIGNER, AND CUSTOM COLOR OFFERINGS.
 5. MANUFACTURER'S INSTALLATION DIAGRAM PROVIDED FOR REFERENCE ONLY, VALIDATE PLAN CONDITIONS MATCH ARCHITECTURAL DRAWINGS PRIOR TO ORDERING.
 6. MANUFACTURER'S REFERENCE NUMBER PROVIDED IN MATERIAL SELECTION SCHEDULE FOR CUSTOM GRAPHIC PRINTED CARPET TILE.
 7. INSTALLATION OF FINISH MATERIAL AND PATTERN SHALL EXTEND UNDER ALL OPEN CABINETS AND COUNTERTOPS.

THIS DRAWING SHEET IS INTENDED TO BE PLOTTED IN COLOR. IF THIS TEXT APPEARS IN BLACK AND WHITE, IT IS PLOTTED INCORRECTLY. DISCARD AND OBTAIN AN ACCURATE DRAWING

- CPTL-4
- CPTL-6E
- CPTL-6D
- CPTL-7C
- CPTL-5 B

- 989.7 SQ FT
- 202.8 SQ FT
- 166.4 SQ FT
- 203.3 SQ FT
- 278.4 SQ FT



CUT PLANKS USED ON "A"

Portage Woodland Elementary
November 1, 2024
OP-000283637



SALES REP:
Kathy Cain
kathy.cain@milliken.com

ENVISIONED BY
Katie Elmore
katie.elmore@milliken.com

VISION
LAB
Concept. Collaborate. Create.

Milliken

OWNER: PORTAGE PUBLIC SCHOOLS
SHEET TITLE: PATTERN PLAN - LIBRARY CARPET TILE INSTALLATION

DATE: NOVEMBER 15, 2024
SHEET NUMBER: 1203
21-237.50

RY SCHOOL

ISSUED FOR: DATE:

TowerPinkster
Architecture · Engineering · Interiors
© 2024. ALL RIGHTS RESERVED

UPPER HEART 260

- CPTL-4
- CPTL-7C
- CPTL-6D

776.6 SQ FT
174.4 SQ FT
147.6 SQ FT

- INTERIOR - GENERAL NOTES - PATTERN PLANS
1. REFER TO FINISH PLANS AND MATERIAL SELECTION SCHEDULE FOR MATERIAL TYPE DESIGNATIONS AND RELATED SCOPE REQUIREMENTS.
 2. VERIFY ALL DIMENSIONS IN THE FIELD AND ALERT ARCHITECT OF ANY CONFLICTS PRIOR TO BEGINNING WORK.
 3. COORDINATE MARKING DIMENSIONS WITH FINAL APPROVED GYMNASIUM EQUIPMENT, SUBMITTALS AND OFFICIAL STATE-RECOGNIZED COMPETITION MARKING STANDARDS.
 4. ARCHITECT TO SELECT MARKING COLORS FROM MANUFACTURERS FULL RANGE OF STANDARD, DESIGNER, AND CUSTOM COLOR OFFERINGS.
 5. MANUFACTURER'S INSTALLATION DIAGRAM PROVIDED FOR REFERENCE ONLY, VALIDATE PLAN CONDITIONS MATCH ARCHITECTURAL DRAWINGS PRIOR TO ORDERING.
 6. MANUFACTURER'S REFERENCE NUMBER PROVIDED IN MATERIAL SELECTION SCHEDULE FOR CUSTOM GRAPHIC PRINTED CARPET TILE.
 7. INSTALLATION OF FINISH MATERIAL AND PATTERN SHALL EXTEND UNDER ALL OPEN CABINETS AND COUNTERTOPS.

THIS DRAWING SHEET IS INTENDED TO BE PLOTTED IN COLOR. IF THIS TEXT APPEARS IN BLACK AND WHITE, IT IS PLOTTED INCORRECTLY. DISCARD AND OBTAIN AN ACCURATE DRAWING



CUT PLANKS USED ON "A"



Portage Woodland Elementary
November 1, 2024
OP-000283637



SALES REP:
Kathy Cain
kathy.cain@milliken.com

ENVISIONED BY
Katie Elmore
katie.elmore@milliken.com

VISION
LAB
Concept. Collaborate. Create.

Milliken

PROJECT TITLE
WOODLAND ELEMENTARY SCHOOL

OWNER
PORTAGE PUBLIC SCHOOLS

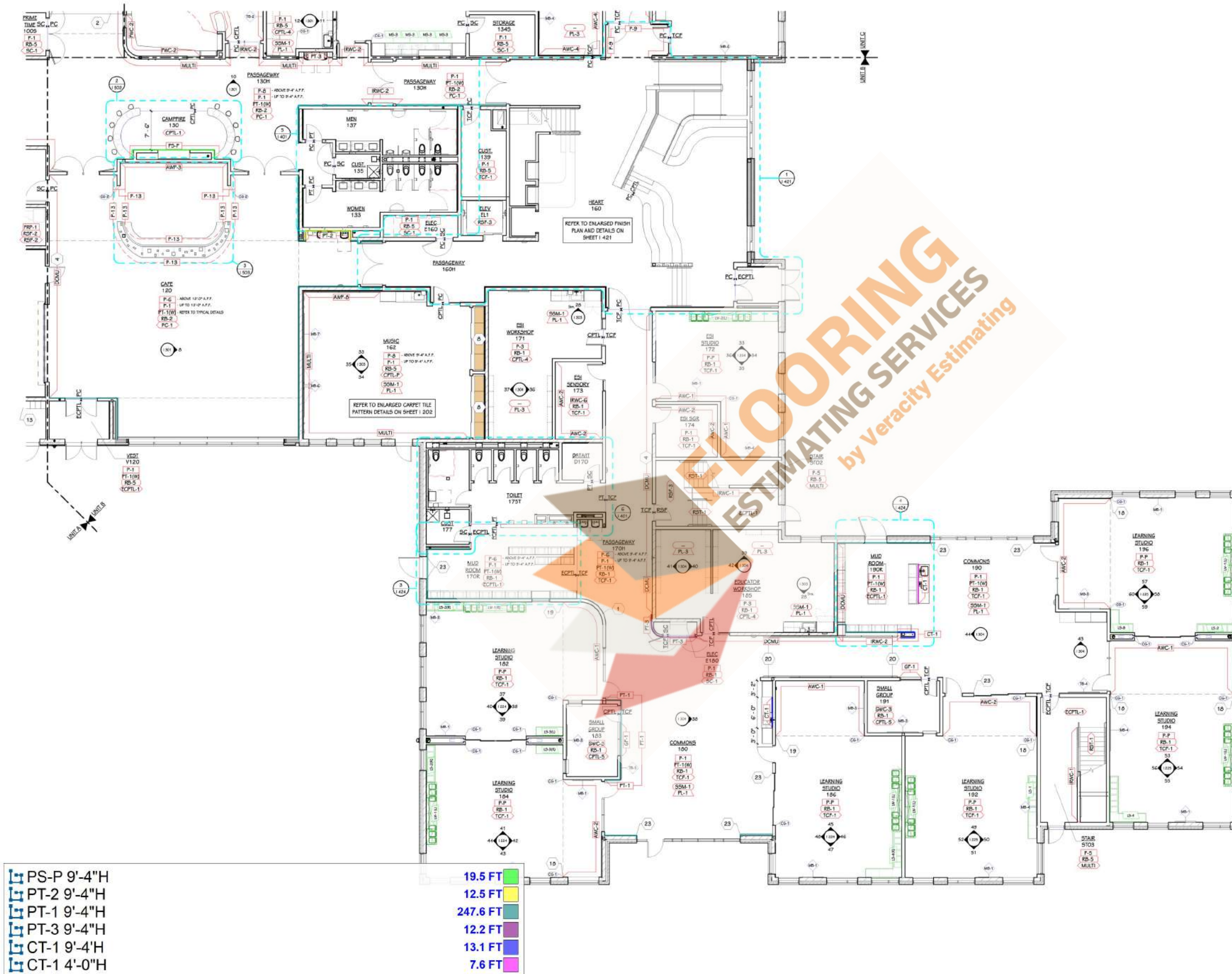
SHEET TITLE
PATTERN PLAN - UPPER HEART AND
FLEX STUDIO CARPET TILE AND LVT
INSTALLATION

SHEET NUMBER
1204
21-237.50

DATE
NOVEMBER 15, 2024

Portage, Michigan

ISSUED FOR
DATE



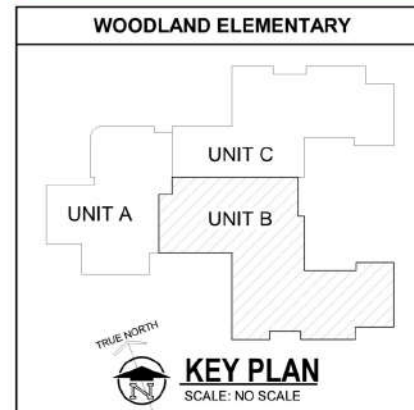
PS-P 9'-4"H
PT-2 9'-4"H
PT-1 9'-4"H
PT-3 9'-4"H
CT-1 9'-4"H
CT-1 4'-0"H

19.5 FT
12.5 FT
247.6 FT
12.2 FT
13.1 FT
7.6 FT

FIRST FLOOR FINISH PLAN - UNIT B
1/8" = 1'-0"

- ### INTERIOR - GENERAL NOTES - FINISH PLANS
- 1 FINISH TAGS APPLY TO LIKE MATERIALS IN ENTIRE ROOM. I.E. CASEWORK TAG MAY ONLY CALLOUT ONE RUN OF CASEWORK, BUT ALL CASEWORK IN ROOM RECEIVE THE SAME FINISHES, UNLESS TAGGED DIFFERENTLY.
 - 2 REFER TO ENLARGED FINISH PLANS AND PATTERN PLANS FOR ADDITIONAL FINISH DETAILS.
 - 3 DASHED LINES INDICATE LINE OF CEILING ABOVE, REFER TO REFLECTED CEILING PLANS.
 - 4 CASEWORK FINISH TAGS DO NOT APPLY TO CUSTOM MILLWORK PIECES. REFER TO ENLARGED MILLWORK DETAILS FOR FINISH MATERIALS.
 - 5 CASEWORK FINISH TAGS DO NOT APPLY TO EDUCATIONAL CASEGOOD PIECES. REFER TO TAGS AND SPECIFICATIONS FOR ADDITIONAL INFORMATION ON TYPE AND FINISH.
 - 6 PORCELAIN TILE WAINSCOT IS NOT REQUIRED BEHIND STUDENT CUBBIES.
 - 7 AT ALL AREAS OF EXPOSED CEILING, CEILING DATUM TO BE HELD AT 9'-4" AFF, UNLESS OTHERWISE NOTED. ALL INFRASTRUCTURE TO BE HELD ABOVE THIS DATUM, REFER TO REFLECTED CEILING PLAN AND NOTES FOR PAINTING SCOPE AND INTENT.
 - 8 HALFTONE RESIDENTIAL AND BUSINESS EQUIPMENT TO BE OWNER FURNISHED.
- ### INTERIOR - KEYED NOTES - FINISH PLAN
- 1 WHERE RADIISED WALLS ARE INDICATED TO BE PT-1(W), PROVIDE PT-2 COORDINATING MOSAIC AS REQUIRED TO WRAP TO NEAREST FLAT SURFACE. ALIGN ALL GROUT JOINTS.
 - 2 ALIGN FLOORING TRANSITION AS INDICATED.
 - 3 CONTINUE PORCELAIN TILE WAINSCOT PT-1(W) INTO RETURN/VARIABLES.
 - 4 DO NOT APPLY PAINT OR PORCELAIN TILE WAINSCOT TO DECORATIVE CONCRETE, MASONRY WALLS, TYPICAL.
 - 5 FRP PANELS TO BE INSTALLED ABOVE RUBBER BASE, INSTALL FULL SHEET VERTICALLY ORIENTED.
 - 6 ACRIC-RESISTANT GYPSUM BOARD PROJECTION SURFACE WITH LEVEL 3 FINISH WITH MITERED DARK BRONZE ANODIZED J-CHANNEL FRAME. REFER TO ELEVATION.
 - 7 VERIFY FINISH EXTENTS WITH FOOD SERVICE EQUIPMENT PRIOR TO INSTALLATION.
 - 8 36" WIDE X 24" DEEP ADJUSTABLE PR-1 SHELVING ON WALL STANDARDS.
 - 9 36" WIDE X 12" DEEP ADJUSTABLE PR-1 SHELVING ON WALL STANDARDS.
 - 10 MEDIUM-GROUND POLISHED CONCRETE (FILL IN METAL PAN STAIRS, PROVIDE (2) INSET STAINLESS STEEL BARS AT NOSING OF EACH STAIR TREAD.
 - 11 PROVIDE CONTINUOUS, MITERED FURRING STRIPS ABOVE WAINSCOT FOR FLUSH AND FLAT TACKBOARD INSTALLATION, CAULK ALL JOINTS AND PAINT TO MATCH WALL.
 - 12 SKIMCOAT CMU WALL AS REQUIRED FOR SMOOTH IRWP-1 INSTALLATION, REFER TO ELEVATION FOR EXTENTS.
 - 13 METAL LOCKERS, REFER TO ARCHITECTURAL.
 - 14 ALIGN FLOORING TRANSITION TO DOOR FRAME.
 - 15 ALIGN FLOORING TRANSITION TO CABINET EDGE/CORNER.
 - 16 ALIGN FLOORING TRANSITION TO CORNER.
 - 17 ALIGN FLOORING TRANSITION TO WINDOW.
 - 18 WHERE FURRED WALLS WITH ACOUSTIC WALLCOVERING TERMINATE, PAINT RETURN P-1 UNLESS NOTED OTHERWISE.
 - 19 WHERE ACOUSTIC WALLCOVERING TERMINATES ALONG A FLAT SURFACE, PROVIDE FRP RESIST TERMINATION TRIM ALIGNED TO OUTSIDE FACE OF DULHEAD TO CAPTURE EXPOSED EDGE OF AWC.
 - 20 PROVIDE CONTRASTING RESILIENT ACCENT STRIP AT TOP AND BOTTOM OF RAMP.
 - 21 SOLID SURFACE CAP AND WATERFALL EDGE, SS-M-1 - REFER TO DETAILS.
 - 22 SOLID SURFACE CAP, SS-M-1 - REFER TO DETAILS.
 - 23 RETURN FURRING AND TILE TO FRAME.
 - 24 FRP TO WRAP OPENINGS.
 - 25 1" THICK UNIT CHORDA PIN PARTITION, RP-2.

THIS DRAWING SHEET IS INTENDED TO BE PLOTTED IN COLOR. IF THIS TEXT APPEARS IN BLACK AND WHITE, IT IS PLOTTED INCORRECTLY. DISCARD AND OBTAIN AN ACCURATE DRAWING



ISSUED FOR

DATE

PROJECT TITLE
WOODLAND ELEMENTARY SCHOOL

OWNER
PORTAGE PUBLIC SCHOOLS

SHEET TITLE
FIRST FLOOR FINISH PLAN - UNIT A

Portage, Michigan

DATE
NOVEMBER 15, 2024

SHEET NUMBER
I 101A
21-237.50

INTERIOR - GENERAL NOTES - FINISH PLANS

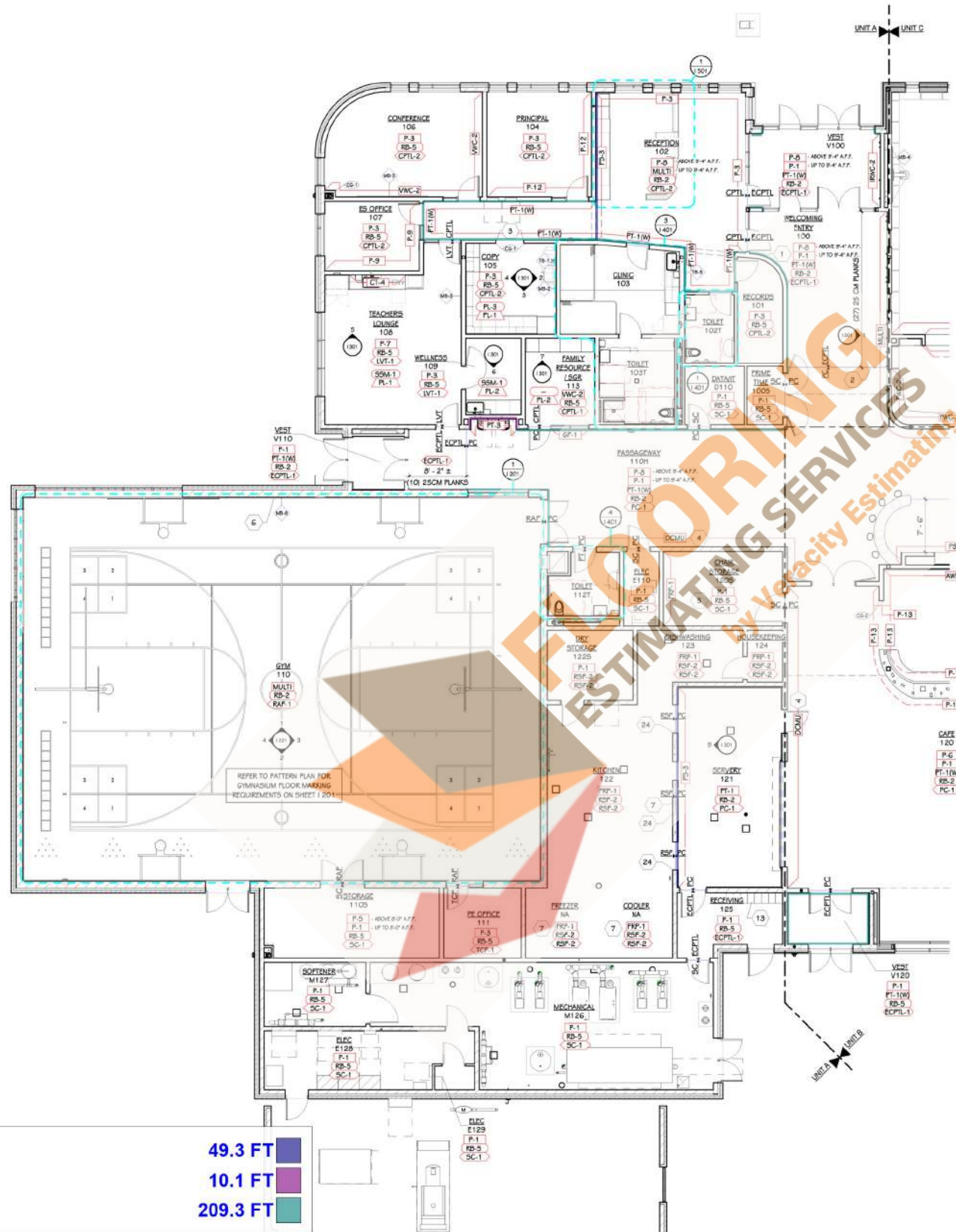
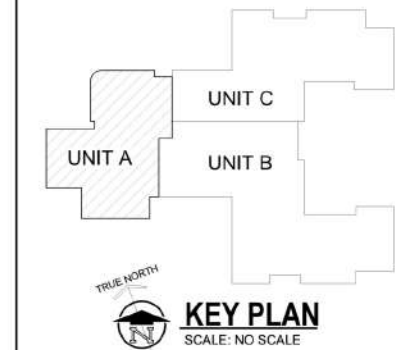
- 1 FINISH TAGS APPLY TO LIKE MATERIALS IN ENTIRE ROOM. I.E. CASEWORK TAG MAY ONLY CALLOUT ONE RUN OF CASEWORK, BUT ALL CASEWORK IN ROOM RECEIVE THE SAME FINISHES, UNLESS TAGGED DIFFERENTLY.
- 2 REFER TO ENLARGED FINISH PLANS AND PATTERN PLANS FOR ADDITIONAL FINISH DETAILS.
- 3 DASHED LINES INDICATE LINE OF CEILING ABOVE, REFER TO REFLECTED CEILING PLANS.
- 4 CASEWORK FINISH TAGS DO NOT APPLY TO CUSTOM MILLWORK PIECES. REFER TO ENLARGED MILLWORK DETAILS FOR FINISH MATERIALS.
- 5 CASEWORK FINISH TAGS DO NOT APPLY TO EDUCATIONAL CASEGOOD PIECES. REFER TO TAGS AND SPECIFICATIONS FOR ADDITIONAL INFORMATION ON TYPE AND FINISH.
- 6 PORCELAIN TILE WAINSCOT IS NOT REQUIRED BEHIND STUDENT CUBBIES.
- 7 AT ALL AREAS OF EXPOSED CEILING, CEILING DATUM TO BE HELD AT 9'-4" AFF, UNLESS OTHERWISE NOTED. ALL INFRASTRUCTURE TO BE HELD ABOVE THIS DATUM, REFER TO REFLECTED CEILING PLAN AND NOTES FOR PAINTING SCOPE AND INTENT.
- 8 HALFTONE RESIDENTIAL AND BUSINESS EQUIPMENT TO BE OWNER FURNISHED.

INTERIOR - KEYED NOTES - FINISH PLAN

- 1 WHERE RADIIUSED WALLS ARE INDICATED TO BE PT-1(W), PROVIDE PT-2 COORDINATING MOSAIC AS REQUIRED TO WRAP TO NEAREST FLAT SURFACE. ALIGN ALL GROUT JOINTS.
- 2 ALIGN FLOORING TRANSITION AS INDICATED.
- 3 CONTINUE PORCELAIN TILE WAINSCOT PT-1(W) INTO RETURN/STAIRS.
- 4 DO NOT APPLY PAINT OR PORCELAIN TILE WAINSCOT TO DECORATIVE CONCRETE, MASONRY WALLS, TYPICAL.
- 5 FRP PANELS TO BE INSTALLED ABOVE RUBBER BASE, INSTALL FULL SHEET VERTICALLY ORIENTED.
- 6 ABUSE-RESISTANT GYPSUM BOARD PROJECTION SURFACE WITH LEVEL 3 FINISH WITH WATERED DARK BRONZE ANCOZED J-CHANNEL FRAME. REFER TO ELEVATION.
- 7 VERIFY FINISH EXTENTS WITH FOOD SERVICE EQUIPMENT PRIOR TO INSTALLATION.
- 8 36" WIDE X 24" DEEP ADJUSTABLE PR-1 SHELVING ON WALL STANDARDS.
- 9 36" WIDE X 12" DEEP ADJUSTABLE PR-1 SHELVING ON WALL STANDARDS.
- 10 MEDIUM-GROUND POLISHED CONCRETE (MPC) IN METAL PAN STAIRS, PROVIDE (2) INSET STAINLESS STEEL BARS AT NOSING OF EACH STAIR TREAD.
- 11 PROVIDE CONTINUOUS, MITERED FURRING STRIPS ABOVE WAINSCOT FOR FLUSH AND FLAT TACKBOARD INSTALLATION, CAULK ALL JOINTS AND PAINT TO MATCH WALL.
- 12 SKIMCOAT CMU WALL AS REQUIRED FOR SMOOTH IRMP-1 INSTALLATION, REFER TO ELEVATION FOR DETAILS.
- 13 METAL LOCKERS, REFER TO ARCHITECTURAL.
- 14 ALIGN FLOORING TRANSITION TO DOOR FRAME.
- 15 ALIGN FLOORING TRANSITION TO CABINET EDGE/CORNER.
- 16 ALIGN FLOORING TRANSITION TO CORNER.
- 17 ALIGN FLOORING TRANSITION TO WINDOW.
- 18 WHERE FURRED WALLS WITH ACOUSTIC WALLCOVERING TERMINATE, PAINT RETURN P-1 UNLESS NOTED OTHERWISE.
- 19 WHERE ACOUSTIC WALLCOVERING TERMINATES ALONG A FLAT SURFACE, PROVIDE FRP REGLET TERMINATION TRIM ALIGNED TO OUTSIDE FACE OF BULKHEAD TO CAPTURE EXPOSED EDGE OF AWC.
- 20 PROVIDE CONTRASTING RESILIENT ACCENT STRIP AT TOP AND BOTTOM OF RAMP.
- 21 SOLID SURFACE CAP AND WATERFALL EDGE, SSMA-1 - REFER TO DETAILS.
- 22 SOLID SURFACE CAP, SSMA-1 - REFER TO DETAILS.
- 23 RETURN FURRING AND TILE TO FRAME.
- 24 FRP TO WRAP OPENINGS.
- 25 1" THICK UNIL CHROMA FIN PARTITION, RP-2.

THIS DRAWING SHEET IS INTENDED TO BE PLOTTED IN COLOR. IF THIS TEXT APPEARS IN BLACK AND WHITE, IT IS PLOTTED INCORRECTLY. DISCARD AND OBTAIN AN ACCURATE DRAWING

WOODLAND ELEMENTARY



ISSUED FOR

DATE

PROJECT TITLE
WOODLAND ELEMENTARY SCHOOL

OWNER
PORTAGE PUBLIC SCHOOLS

Portage, Michigan

SHEET TITLE
FIRST FLOOR FINISH PLAN - UNIT C

DATE
NOVEMBER 15, 2024

SHEET NUMBER
I 101C
21-237.50

INTERIOR - GENERAL NOTES - FINISH PLANS

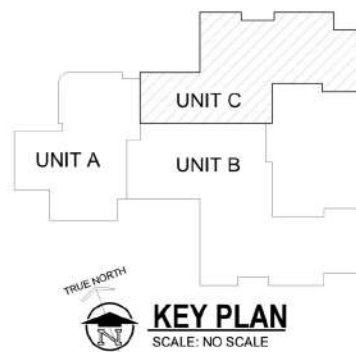
- 1 FINISH TAGS APPLY TO LIKE MATERIALS IN ENTIRE ROOM. I.E. CASEWORK TAG MAY ONLY CALLOUT ONE RUN OF CASEWORK, BUT ALL CASEWORK IN ROOM RECEIVE THE SAME FINISHES, UNLESS TAGGED DIFFERENTLY.
- 2 REFER TO ENLARGED FINISH PLANS AND PATTERN PLANS FOR ADDITIONAL FINISH DETAILS.
- 3 DASHED LINES INDICATE LINE OF CEILING ABOVE, REFER TO REFLECTED CEILING PLANS.
- 4 CASEWORK FINISH TAGS DO NOT APPLY TO CUSTOM MILLWORK PIECES. REFER TO ENLARGED MILLWORK DETAILS FOR FINISH MATERIALS.
- 5 CASEWORK FINISH TAGS DO NOT APPLY TO EDUCATIONAL CASEGOOD PIECES. REFER TO TAGS AND SPECIFICATIONS FOR ADDITIONAL INFORMATION ON TYPE AND FINISH.
- 6 PORCELAIN TILE WAINSCOT IS NOT REQUIRED BEHIND STUDENT CUBBIES.
- 7 AT ALL AREAS OF EXPOSED CEILING, CEILING DATUM TO BE HELD AT 9'-4" AFF, UNLESS OTHERWISE NOTED. ALL INFRASTRUCTURE TO BE HELD ABOVE THIS DATUM, REFER TO REFLECTED CEILING PLAN AND NOTES FOR PAINTING SCOPE AND INTENT.
- 8 HALFTONE RESIDENTIAL AND BUSINESS EQUIPMENT TO BE OWNER FURNISHED.

INTERIOR - KEYED NOTES - FINISH PLAN

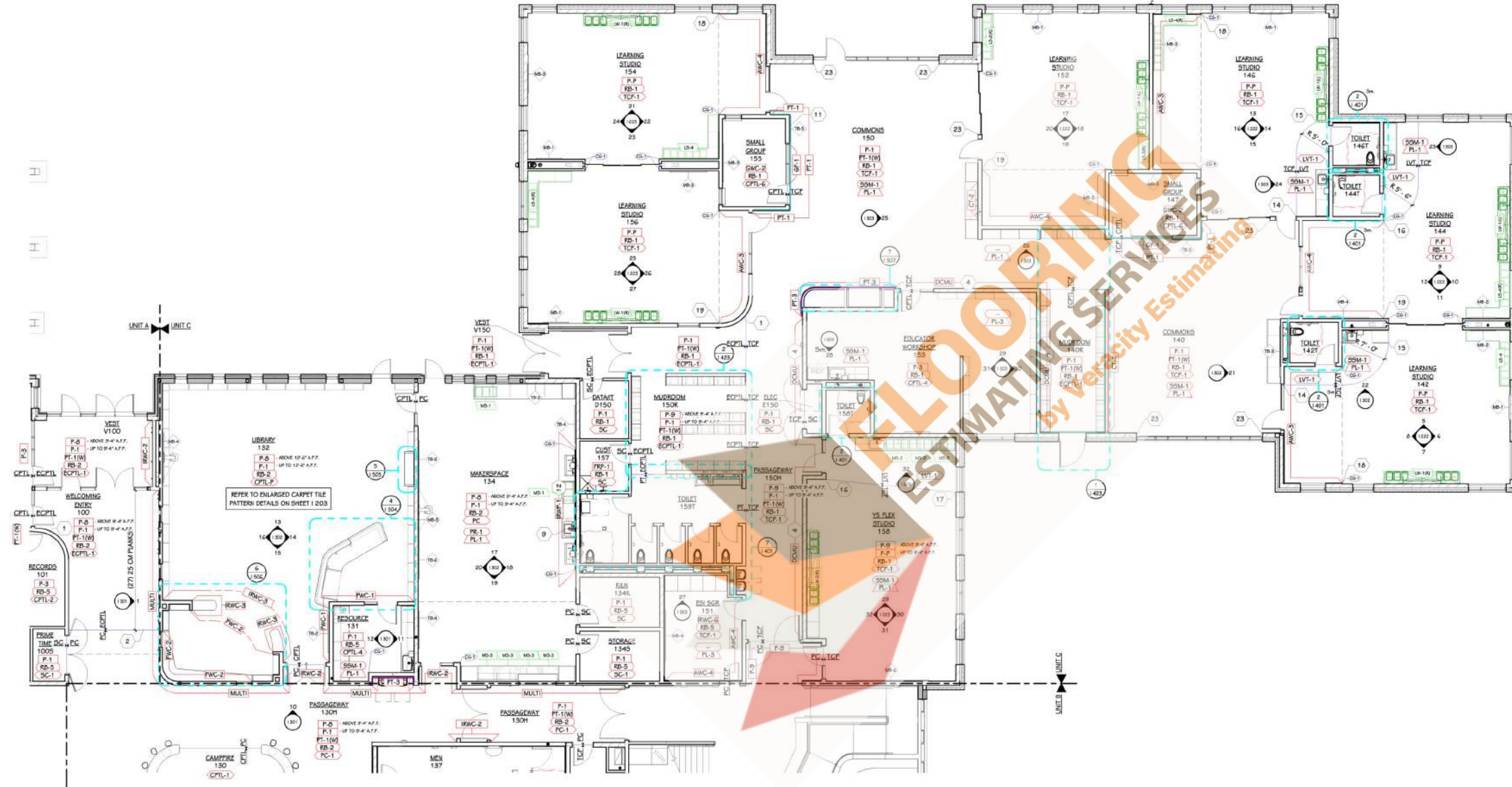
- 1 WHERE RADIIUSED WALLS ARE INDICATED TO BE PT-1(W), PROVIDE PT-2 COORDINATING MOSAIC AS REQUIRED TO WRAP TO NEAREST FLAT SURFACE. ALIGN ALL GROUT JOINTS.
- 2 ALIGN FLOORING TRANSITION AS INDICATED.
- 3 CONTINUE PORCELAIN TILE WAINSCOT PT-1(W) INTO RETURNS/JAMBS.
- 4 DO NOT APPLY PAINT OR PORCELAIN TILE WAINSCOT TO DECORATIVE CONCRETE, MASONRY WALLS, TYPICAL.
- 5 FRP PANELS TO BE INSTALLED ABOVE RUBBER BASE, INSTALL FULL SHEET VERTICALLY ORIENTED.
- 6 ABUSE-RESISTANT GYPSUM BOARD PROJECTION SURFACE WITH LEVEL 3 FINISH WITH WATERED DARK BRONZE ANCOZZED J-CHANNEL FRAME. REFER TO ELEVATION.
- 7 VERIFY FINISH EXTENTS WITH FOOD SERVICE EQUIPMENT PRIOR TO INSTALLATION.
- 8 36" WIDE X 24" DEEP ADJUSTABLE PR-1 SHELVING ON WALL STANDARDS.
- 9 36" WIDE X 12" DEEP ADJUSTABLE PR-1 SHELVING ON WALL STANDARDS.
- 10 MEDIUM-GRAIND POLISHED CONCRETE INFILL IN METAL PAN STAIRS, PROVIDE (2) INSET STAINLESS STEEL BARS AT NOSING OF EACH STAIR TREAD.
- 11 PROVIDE CONTINUOUS, MITERED PURRING STRIPS ABOVE WAINSCOT FOR FLUSH AND FLAT TACKBOARD INSTALLATION, CAULK ALL JOINTS AND PAINT TO MATCH WALL.
- 12 SKIMCOAT CMU WALL AS REQUIRED FOR SMOOTH IRWP-1 INSTALLATION, REFER TO ELEVATION FOR EXTENTS.
- 13 METAL LOCKERS, REFER TO ARCHITECTURAL.
- 14 ALIGN FLOORING TRANSITION TO DOOR FRAME.
- 15 ALIGN FLOORING TRANSITION TO CABINET EDGE/CORNER.
- 16 ALIGN FLOORING TRANSITION TO CORNER.
- 17 ALIGN FLOORING TRANSITION TO WINDOW.
- 18 WHERE FURRED WALLS WITH ACOUSTIC WALLCOVERING TERMINATE, PAINT RETURN P-1 UNLESS NOTED OTHERWISE.
- 19 WHERE ACOUSTIC WALLCOVERING TERMINATES ALONG A FLAT SURFACE, PROVIDE FRP RESIST TERMINATION TRIM ALIGNED TO OUTSIDE FACE OF DULHEAD TO CAPTURE EXPOSED EDGE OF AWC.
- 20 PROVIDE CONTRASTING RESILIENT ACCENT STRIP AT TOP AND BOTTOM OF RAMP.
- 21 SOLID SURFACE CAP AND WATERFALL EDGE, SS-M-1 - REFER TO DETAILS.
- 22 SOLID SURFACE CAP, SS-M-1 - REFER TO DETAILS.
- 23 RETURN PURRING AND TILE TO FRAME.
- 24 FRP TO WRAP OPENINGS.
- 25 1" THICK UNILIT CHORDA FIN PARTITION, RP-2.

THIS DRAWING SHEET IS INTENDED TO BE PLOTTED IN COLOR. IF THIS TEXT APPEARS IN BLACK AND WHITE, IT IS PLOTTED INCORRECTLY. DISCARD AND OBTAIN AN ACCURATE DRAWING

WOODLAND ELEMENTARY



KEY PLAN
SCALE: NO SCALE



NOTES - ENLARGED TOILET FINISH PLANS

1. REFER TO MATERIAL SELECTION SCHEDULE FOR FINISH INFORMATION.
2. REFER TO ARCHITECTURAL FLOOR PLANS AND SPECIFICATION FOR ADDITIONAL INFORMATION ON CONSTRUCTION MATERIALS.
3. REFER TO ARCHITECTURAL ENLARGED PLANS FOR TOILET ACCESSORIES, PARTITIONS, BARRIER-FREE REQUIREMENTS, ETC.
4. REFER TO REFLECTED CEILING PLANS FOR CEILING FINISH AND HEIGHTS.
5. REFER TO INTERIORS TYPICAL DETAIL SHEETS FOR TILE TRIM DETAILS, FLOORING TRANSITIONS, WAINSCOT DETAILS, AND TYPICAL TILE PATTERN REQUIREMENTS.
6. WHERE HEIGHT IS INDICATED FOR IMPACT RESISTANT WALL PANEL AND FIBERGLASS REINFORCED PLASTIC PANELING NOTED HEIGHT IS NOMINAL. CONTRACTOR TO PROVIDE FULL SHEET HEIGHT OR WIDTH AT/OP SPECIFIED BASE HEIGHT PLUS ANY NECESSARY TRIMS OR ACCESSORIES.
7. DETAILS SHOWN ILLUSTRATE DESIGN INTENT, NOT ALL POSSIBLE CONDITIONS. FOR CONDITIONS NOT SHOWN, USE DETAILS CLOSEST TO CONDITION IN QUESTION.

KEYED NOTES - INTERIORS - ENLARGED TOILET FINISH PLANS

1. ADULT CHANGING TABLE, BY OWNER.
2. PROVIDE CONTINUOUS, MITERED PURKING STRIPS ABOVE WAINSCOT FOR FLUSH AND FLAT MIRROR INSTALLATION, CAULK ALL JOINTS AND PAINT TO MATCH WALL.
3. ALIGN FLOORING TRANSITION TO FACE OF ADJACENT WALL, TRANSITION FLOOR BASE PER TYPICAL DETAILS AS REQUIRED BY BASE INDICATED ON FINISH PLANS.
4. INSTALL LEFT DRINKING FOUNTAIN AT ADULT BARRIER-FREE HEIGHT.
5. INSTALL RIGHT DRINKING FOUNTAIN AT CHILD BARRIER-FREE HEIGHT.
6. EXTEND PORCELAIN TILE AND TILE TRIM TO INSIDE CORNER, COPE RESILIENT FLOOR COVE TO TILE.
7. SOLID SURFACE CAP, SSM-1 - REFER TO DETAILS.
8. CEILING-MOUNTED CUBICLE CURTAIN (CC-1) AND TRACK, REFER TO ARCHITECTURAL AND SPECIFICATION.
9. INSTALL RESILIENT SHEET FLOORING PER MANUFACTURER'S RECOMMENDATIONS, REDUCE SEAMS WHERE POSSIBLE.
10. FRP PANELS TO BE INSTALLED ABOVE RUBBER BASE, INSTALL FULL SHEET VERTICALLY ORIENTED.
11. ALIGN FLOORING TRANSITION TO EDGE OF DOOR FRAME, TRANSITION FLOOR BASE PER TYPICAL DETAILS.
12. EXTEND PORCELAIN TILE TO CURRY TOP AND WATERFALL RETURN, OFFSET STACKED BOND VERTICAL JOINT TO AVOID VISIBLE SLIVERS IN TILE PATTERN.
13. PORCELAIN TILE BASE ALL FACES OF HANDWASHING AND DRINKING FOUNTAIN STATION, REFER TO DETAILS.

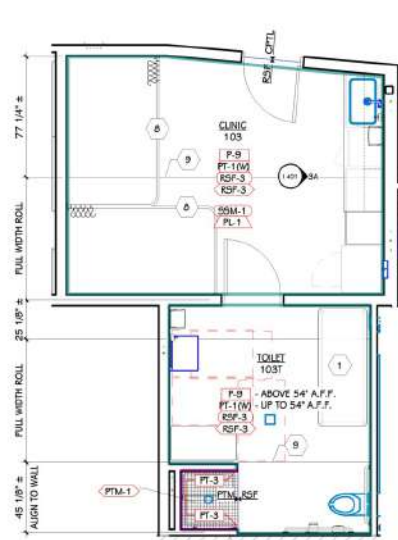


1 OFFICE TOILET ROOM 102T
1/4" = 1'-0"



- CT-1 Toilet Wall
- CT-2
- CT-3
- PT-1 Wall + PT-2 Near To Floor
- PT-3 9'-4"H
- PT-1 9'-4"H

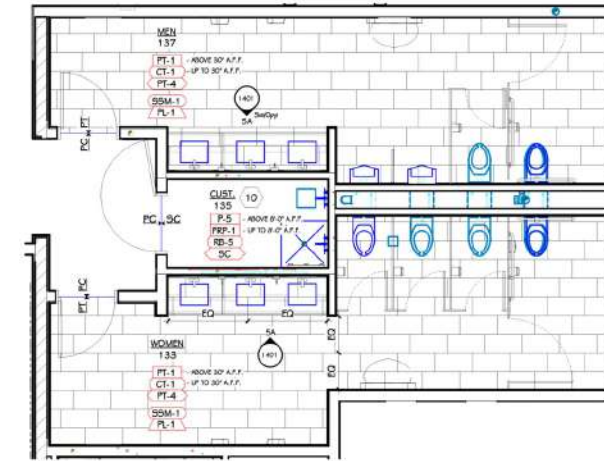
- 32.0 SQ FT
- 25.6 SQ FT
- 32.0 SQ FT
- 250.3 FT
- 9.2 FT
- 100.7 FT



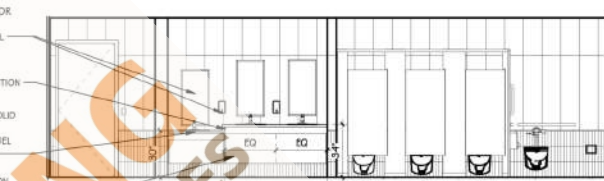
3A CLINIC 103 - EAST
1/4" = 1'-0"



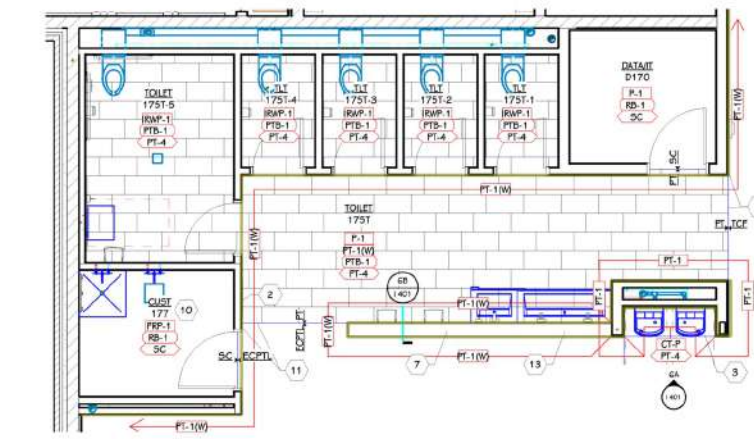
4 PUBLIC AND STAFF TOILET ROOM 112T
1/4" = 1'-0"



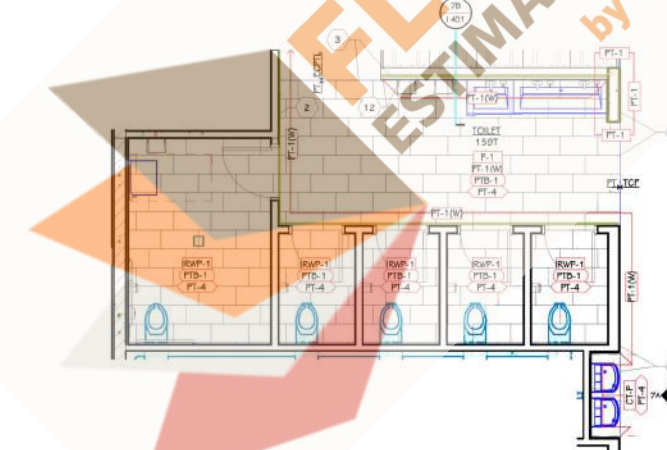
5 PUBLIC TOILET ROOMS 133 & 137
1/4" = 1'-0"



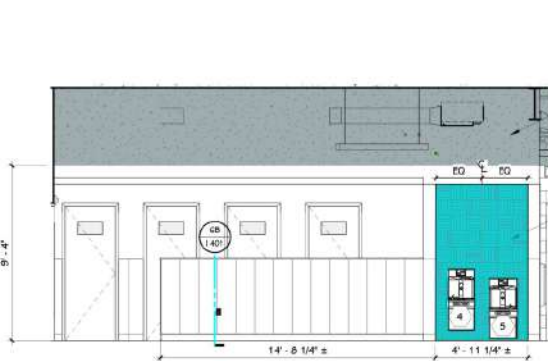
5A 133 WOMEN - SINK
1/4" = 1'-0"



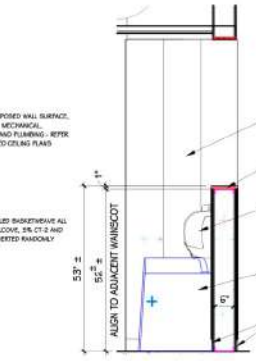
6 STUDENT TOILET ROOM 175T
1/4" = 1'-0"



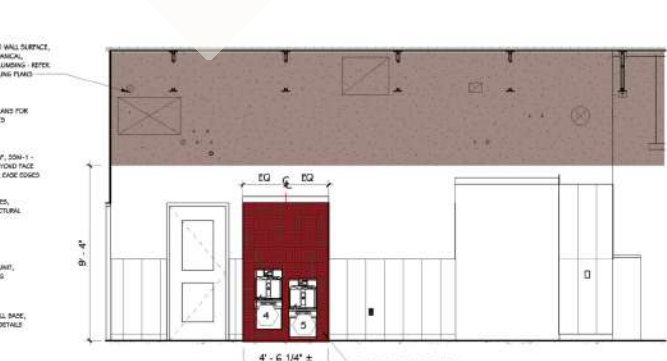
7 STUDENT TOILET ROOM 159T
1/4" = 1'-0"



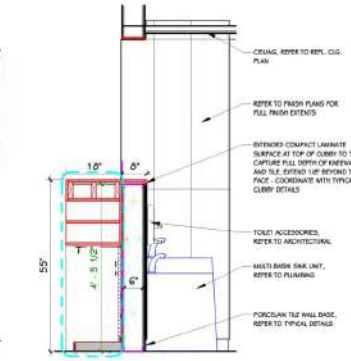
6A TOILET 175T - SOUTH
1/4" = 1'-0"



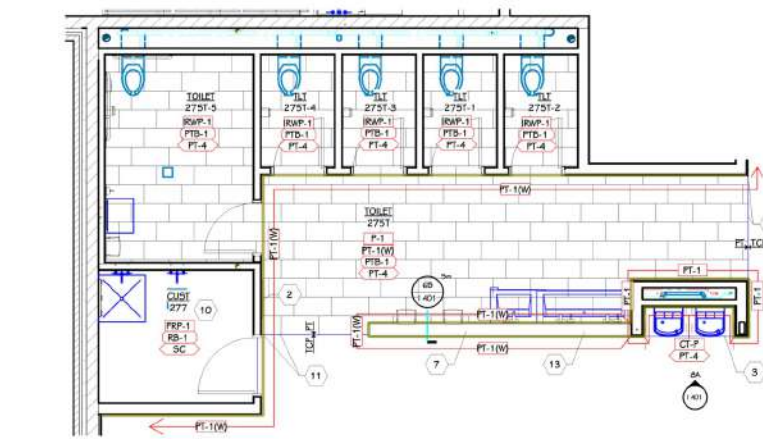
6B STUDENT TOILET KNEEWALL
1/2" = 1'-0"



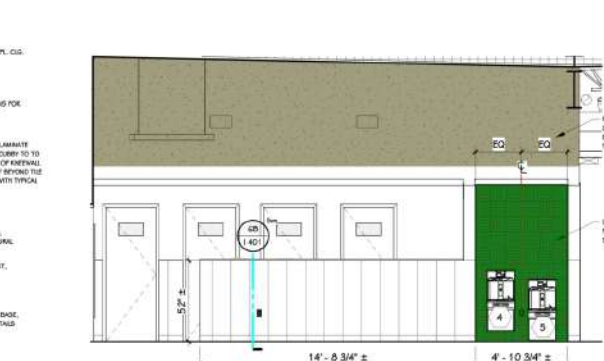
7A TOILET ROOM 159T - EAST
1/4" = 1'-0"



7B STUDENT TOILET KNEEWALL
W. CUBBIES
1/2" = 1'-0"



8 STUDENT TOILET ROOM 275T
1/4" = 1'-0"



8A TOILET 275 - SOUTH
1/4" = 1'-0"

THIS DRAWING SHEET IS INTENDED TO BE PLOTTED IN COLOR. IF THIS TEXT APPEARS IN BLACK AND WHITE, IT IS PLOTTED INCORRECTLY. DISCARD AND OBTAIN AN ACCURATE DRAWING